



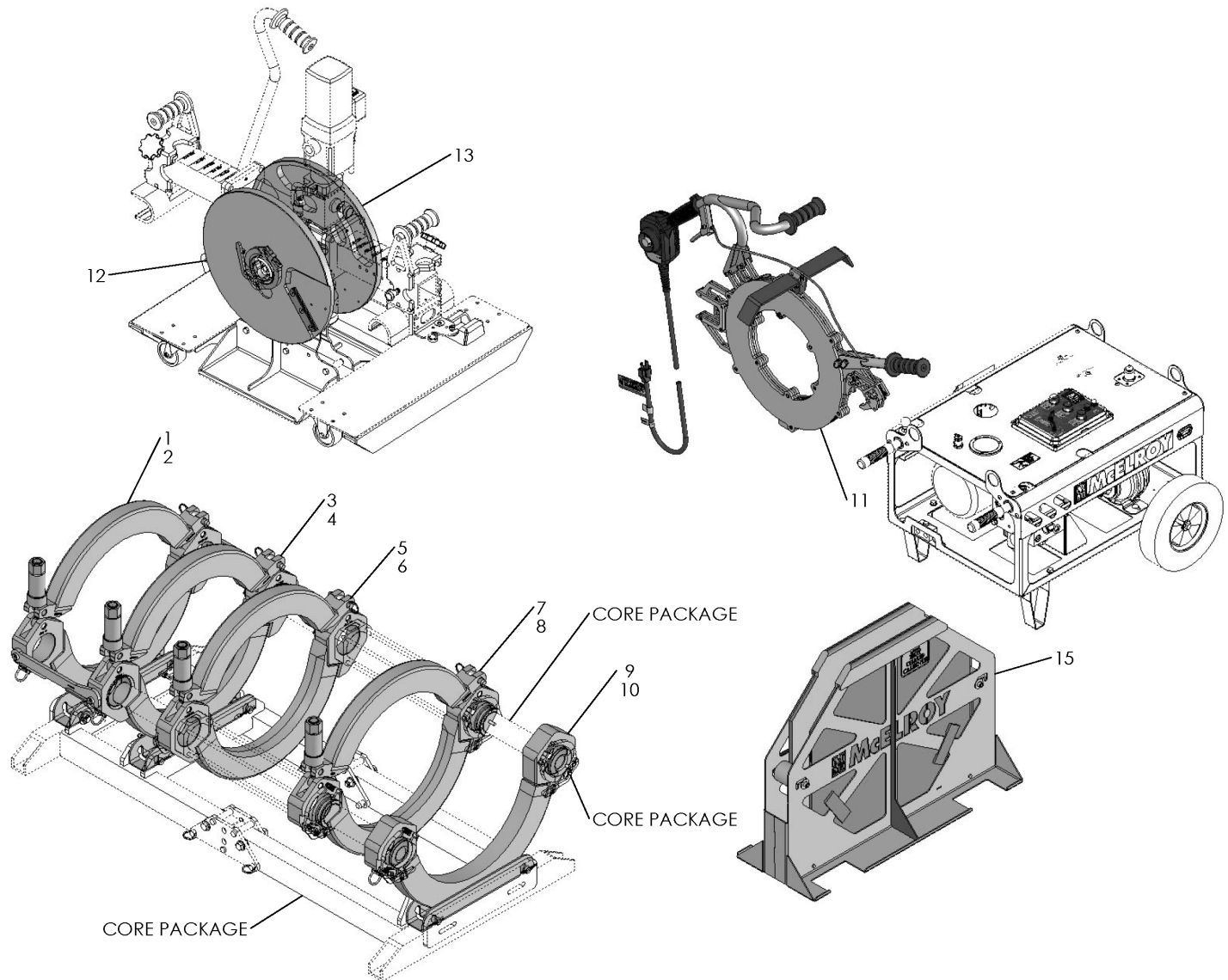
DRAWN:	CHECK:	APPRVD:	DATE:	SHT No:	REV No:	PART No:
MRH	SPA	PJD	4/24/18	1 of 4	A	A2480300

Acrobat™ W/QuikFit™ SIZE PACKAGE

NOTE: THIS DRAWING AND THE INFORMATION CONTAINED THEREIN IS THE CONFIDENTIAL AND PROPRIETARY PROPERTY OF McElroy Manufacturing, Inc. THE DRAWING IS NOT TO BE REPRODUCED IN ANY MANNER, SUBMITTED TO OUTSIDE PARTIES FOR EXAMINATION, OR USED DIRECTLY OR INDIRECTLY FOR THE PURPOSES OTHER THAN THOSE FOR WHICH IT WAS FURNISHED WITHOUT WRITTEN PERMISSION OF McElroy Manufacturing, Inc.

NOTES:

1. ONLY ITEMS SHOWN IN COLOR INCLUDED IN THIS PACKAGE



McElroy Manufacturing Parts List

Part Number: A2480301 Acrobat with QuikFit 355/400mm Size Package

Part Number A2480301 Component List

Item	Component	Description	Quantity	Unit	Price
1	2480401	Acrobat w/ QuikFit 355mm Outer Fixed Jaw Assembly	1.0	EA	1,840.00
2	2480402	Acrobat w/ QuikFit 400mm Outer Fixed Jaw Assembly	1.0	EA	1,840.00
3	2480501	Acrobat with QuikFit 355mm Inner Fixed Jaw Assembly	1.0	EA	1,840.00
4	2480502	Acrobat with QuikFit 400mm Inner Fixed Jaw Assembly	1.0	EA	1,840.00
5	2480601	Acrobat w/ QuikFit 355mm Inner Moveable Jaw Assembly	1.0	EA	1,840.00
6	2480602	Acrobat w/ QuikFit 400mm Inner Moveable Jaw Assembly	1.0	EA	1,840.00
7	2480701	Acrobat w/ QuikFit 355mm Outer Moveable Jaw Assembly	1.0	EA	1,840.00
8	2480702	Acrobat w/ QuikFit 400mm Outer Moveable Jaw Assembly	1.0	EA	1,840.00
9	2480901	Acrobat w/ QuikFit 355mm Guide Rod Support Assembly	1.0	EA	990.00
10	2480902	Acrobat w/ QuikFit 400mm Guide Rod Support Assembly	1.0	EA	0.00
11	2481401	Obsolete & Replaced by 2497801 (Effective to 9/14/20)	1.0	EA	0.00
11	2497801	Acrobat 400mm Heater Assembly	1.0	EA	5,236.00
12	2486901	Acrobat Facer 400mm Cover Side Blade Holder Assembly	1.0	EA	2,771.00
13	2486902	Acrobat Facer 400mm Body Side Blade Holder Assembly	1.0	EA	2,771.00
14	2493701	Acrobat 355/400mm Box Assembly	1.0	EA	3,812.00
15	2495501	400mm Heater Bag Assembly	1.0	EA	1,914.00

Please visit <https://fusion.mcelroy.com/parts> to purchase parts or for more information.