



McElroy Manufacturing, Inc.

The leader by design.

Tulsa, Oklahoma U.S.A.

DRAWN:

LCC

CHECK:

BWJ

APPR'VD:

JAL

DATE:

03/13/14

SHT

No: 1

REV

No:

PART

No:

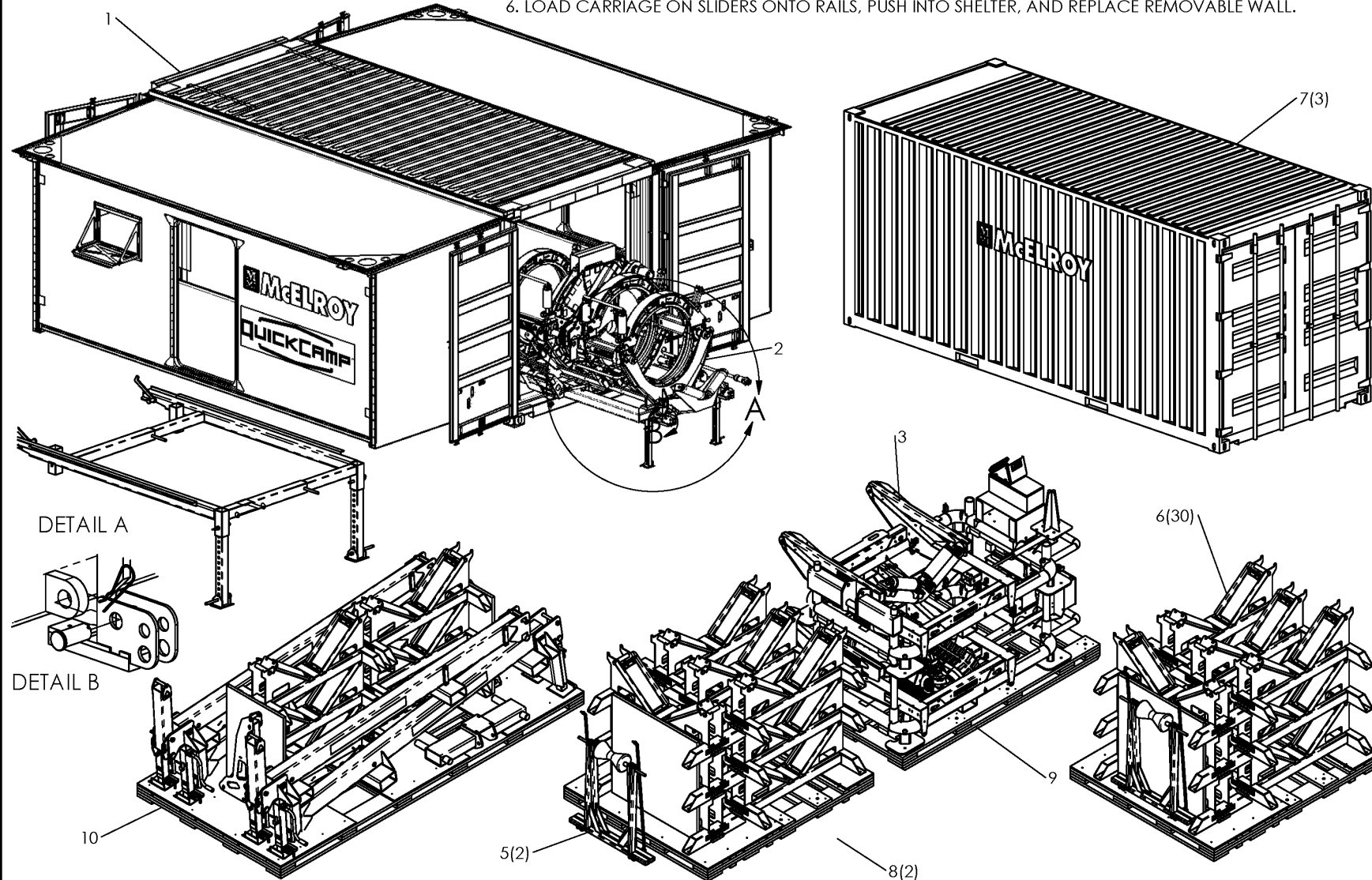
A3658500

# QUICKCAMP™ 900 PACKAGE

NOTE: THIS DRAWING AND THE INFORMATION CONTAINED THEREIN IS THE CONFIDENTIAL AND PROPRIETARY PROPERTY OF McElroy Manufacturing, Inc. THE DRAWING IS NOT TO BE REPRODUCED IN ANY MANNER, SUBMITTED TO OUTSIDE PARTIES FOR EXAMINATION, OR USED DIRECTLY OR INDIRECTLY FOR THE PURPOSES OTHER THAN THOSE FOR WHICH IT WAS FURNISHED WITHOUT WRITTEN PERMISSION OF McElroy Manufacturing, Inc.

## NOTES:

1. STORE ITEM 4 IN TOOLBOX MOUNTED ON ITEM 3.
2. PACK SKIDS AS SHOWN AND GROUP PACKED SKIDS AS SHOWN INTO ACCESSORY CONTAINERS.
3. DISASSEMBLE TABLE FROM ITEM 1 AND ASSEMBLE INTO CONFIGURATION SHOWN IN DETAIL 'A'.
4. REMOVE END WALL OF ITEM 1 AS SHOWN BY UNFASTENING HAND KNOB SCREWS.
5. PIN THE FOUR POLYETHYLENE SLIDERS FROM ITEM 1 TO EYES OF ITEM 2 AS SHOWN IN DETAIL 'B'.
6. LOAD CARRIAGE ON SLIDERS ONTO RAILS, PUSH INTO SHELTER, AND REPLACE REMOVABLE WALL.



## McElroy Manufacturing Parts List

**Part Number:** A3658501 QuickCamp 900 HF 208/120V Package

### Part Number A3658501 Component List

Item	Component	Description	Quantity	Unit	Price
1	3659001	Quickcamp 208/120V Shelter Assembly	1.0	EA	0.00
2	AT9028501	Replaced by AT9058301 (Effective to 10/22/20)	1.0	EA	0.00
2	AT9058301	PitBull 900 Series 2 220-240V HF Fusion Machine Package	1.0	EA	254,454.00
3	4834001	MegaMc Polyhorse 220-240V, 50/60Hz, 3Ph Assembly	1.0	EA	152,108.00
4	3666101	Mmc Plyhrs 220-240 Gen Cbl Asy	1.0	EA	250.00
5	T9017401	Replaced by T9055801 (Effective to 4/20/16)	2.0	EA	0.00
5	T9055801	24/630/36/900 Standard Pipe Stand Assembly	2.0	EA	3,795.00
6	4842401	54" Low Profile Roller Assembly	30.0	EA	4,331.00
7	3659201	Quickcamp Accessory Shipping Container	3.0	EA	0.00

Please visit <https://fusion.mcelroy.com/parts> to purchase parts or for more information.