



McElroy Manufacturing, Inc.  
The leader by design.  
Tulsa, Oklahoma U.S.A.

DRAWN: SS

CHECK: SWB

APPR'D: B

DATE: 9/11/96

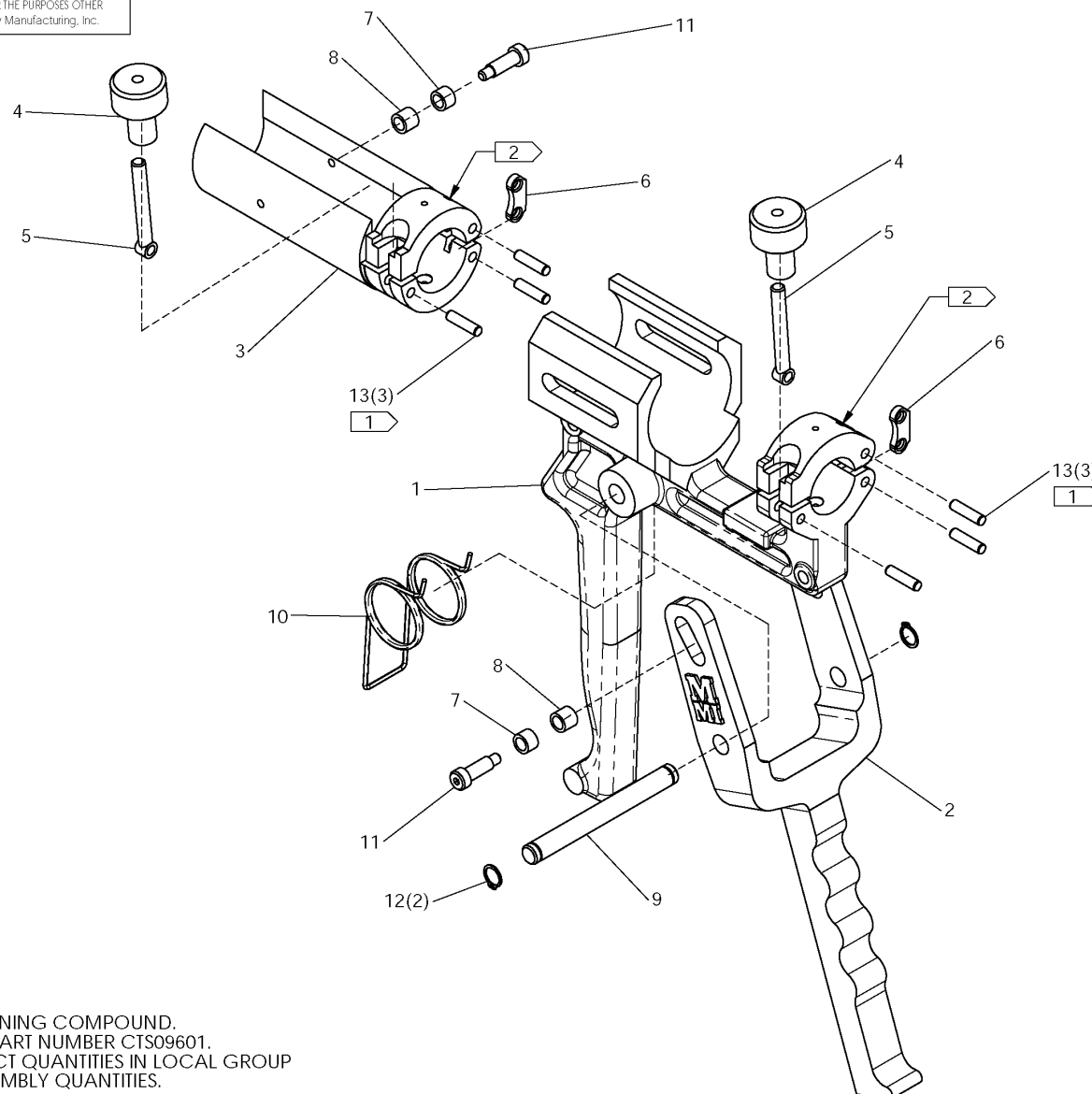
SHT No: 1

REV No: F

PART No: CTS08001

### SPECIAL 32MM Mini-Mc ASSEMBLY

NOTE: THIS DRAWING AND THE INFORMATION CONTAINED THEREIN IS THE CONFIDENTIAL AND PROPRIETARY PROPERTY OF McElroy Manufacturing, Inc. THE DRAWING IS NOT TO BE REPRODUCED IN ANY MANNER, SUBMITTED TO OUTSIDE PARTIES FOR EXAMINATION, OR USED DIRECTLY OR INDIRECTLY FOR THE PURPOSES OTHER THAN THOSE FOR WHICH IT WAS FURNISHED WITHOUT WRITTEN PERMISSION OF McElroy Manufacturing, Inc.



#### NOTES:

1. INSTALL USING HIGH STRENGTH RETAINING COMPOUND.
2. FOR REPLACEMENT CLAMP ORDER PART NUMBER CTS09601.
3. ITEMS SHOWN IN PARENTHESIS REFLECT QUANTITIES IN LOCAL GROUP AND MAY NOT INDICATE TOTAL ASSEMBLY QUANTITIES.

## McElroy Manufacturing Parts List

**Part Number:** CTS08001 32mm MiniMc Assembly

### Part Number CTS08001 Component List

Item	Component	Description	Quantity	Unit	Price
1	CTS09501	32MM Body & Upper Clamp	1.0	EA	0.00
2	CTS06602	1IPS Trigger	1.0	EA	134.00
3	CTS09401	32MM Barrel & Upper Clamp	1.0	EA	397.00
4	CTS10401	Bearing Style Clamp Knob Assy	2.0	EA	64.41
5	CTS05201	Clamp Screw	2.0	EA	45.75
6	CTS05301	Jaw Hinge Link	2.0	EA	12.72
7	CTS03501	Short Spacer Roller	2.0	EA	6.31
8	CTS03502	Long Spacer Roller	2.0	EA	6.31
9	CTS06701	1IPS Trigger&body Pivot Pin	1.0	EA	17.29
10	CTS03701	Torque Spring	1.0	EA	23.37
11	CTS06101	Shoulder Screw Mod	2.0	EA	14.05
12	MCB00017	Ext Snap Ring	2.0	EA	0.96
13	MCI00006	3/16DIA X3/4LG Dowel Pin	6.0	EA	0.74
14	ACTS08201	MiniMc Screw/Driver Kit	1.0	EA	30.45

Please visit <https://fusion.mcelroy.com/parts> to purchase parts or for more information.