



McElroy Manufacturing, Inc.  
The leader by design.  
Tulsa, Oklahoma U.S.A.

DRAWN: SS

CHECK: SWB

APPRVD: B

DATE: 9/10/96

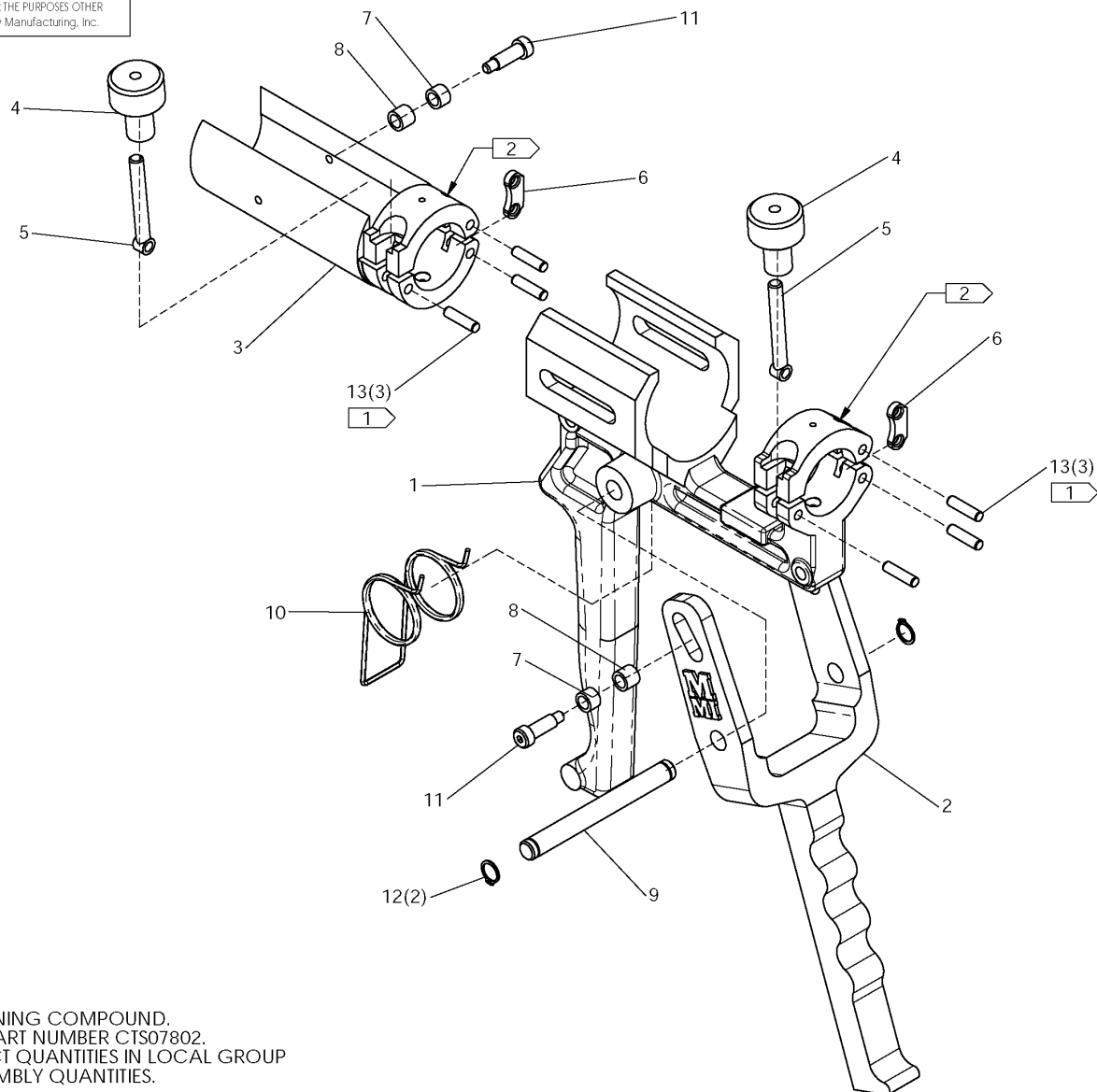
SHT No: 1

REV No: J

PART No: CTS07901

### 1" IPS Mini-Mc ASSEMBLY

NOTE: THIS DRAWING AND THE INFORMATION CONTAINED THEREIN IS THE CONFIDENTIAL AND PROPRIETARY PROPERTY OF McElroy Manufacturing, Inc. THE DRAWING IS NOT TO BE REPRODUCED IN ANY MANNER, SUBMITTED TO OUTSIDE PARTIES FOR EXAMINATION, OR USED DIRECTLY OR INDIRECTLY FOR THE PURPOSES OTHER THAN THOSE FOR WHICH IT WAS FURNISHED WITHOUT WRITTEN PERMISSION OF McElroy Manufacturing, Inc.



#### NOTES:

1. INSTALL USING HIGH STRENGTH RETAINING COMPOUND.
2. FOR REPLACEMENT CLAMP ORDER PART NUMBER CTS07802.
3. ITEMS SHOWN IN PARENTHESIS REFLECT QUANTITIES IN LOCAL GROUP AND MAY NOT INDICATE TOTAL ASSEMBLY QUANTITIES.

## McElroy Manufacturing Parts List

Part Number: CTS07901 1ips MiniMc Assembly



1ips mnmc assy

## Part Number CTS07901 Component List

Item	Component	Description	Quantity	Unit	Price
1	CTS06502	1IPS Body&upper Clamp	1.0	EA	492.00
2	CTS06602	1IPS Trigger	1.0	EA	134.00
3	CTS06402	1IPS Barrel&upper Clamp	1.0	EA	368.00
4	CTS10401	Bearing Style Clamp Knob Assy	2.0	EA	64.41
5	CTS05201	Clamp Screw	2.0	EA	45.75
6	CTS05301	Jaw Hinge Link	2.0	EA	12.72

## McElroy Manufacturing Parts List

**Part Number:** CTS07901 1ips MiniMc Assembly

7	CTS03501	Short Spacer Roller	2.0 EA	6.31
8	CTS03502	Long Spacer Roller	2.0 EA	6.31
9	CTS06701	1IPS Trigger&body Pivot Pin	1.0 EA	17.29
10	CTS03701	Torque Spring	1.0 EA	23.37
11	CTS06101	Shoulder Screw Mod	2.0 EA	14.05
12	MCB00017	Ext Snap Ring	2.0 EA	0.96
13	MCI00006	3/16DIA X3/4LG Dowel Pin	6.0 EA	0.74
14	ACTS08201	MiniMc Screw/Driver Kit	1.0 EA	30.45

Please visit <https://fusion.mcelroy.com/parts> to purchase parts or for more information.

McELROY