



McElroy Manufacturing, Inc.

The leader by design.

Tulsa, Oklahoma U.S.A.

DRAWN:

DJL

CHECK:

BWP

APPRV'D:

SWB

DATE:

9/20/96

DWG
No:

8261000

SHT
No: 1

REV
No: G

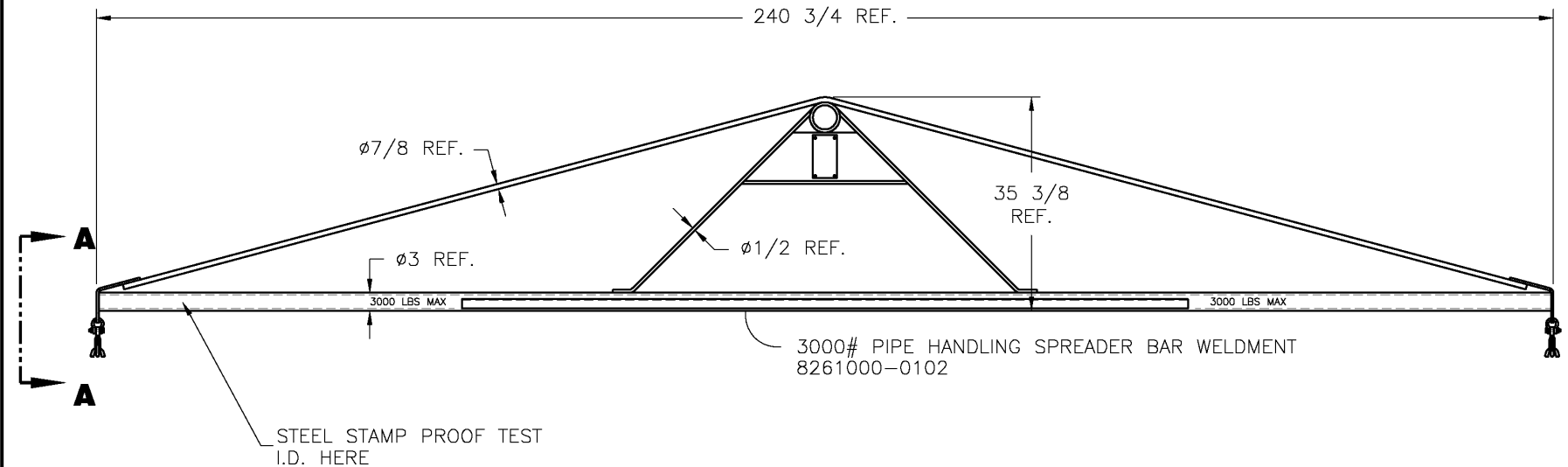
PART
No:

8261000-0101

CAD
No:

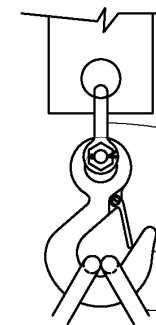
0101

NOTE: THIS DRAWING AND THE INFORMATION CONTAINED THEREIN IS THE CONFIDENTIAL AND PROPRIETARY PROPERTY OF McElroy Manufacturing, Inc. THE DRAWING IS NOT TO BE REPRODUCED IN ANY MANNER, SUBMITTED OUTSIDE PARTIES FOR EXAMINATION, OR USED DIRECTLY OR INDIRECTLY FOR THE PURPOSES OTHER THAN THOSE FOR WHICH IT WAS FURNISHED WITHOUT WRITTEN PERMISSION OF McElroy Manufacturing, Inc.



NOTES:

1. PROOF TEST TO 6000# BEFORE SHIPPING.
2. THIS ASSEMBLY IS PROOF TESTED & CERTIFIED TO LIFT THE SPECIFIED LOAD SHOWN ON THE DRAWING. REPLACEMENT PARTS ARE AVAILABLE ONLY BY SENDING THE ENTIRE SPREADER BAR ASSEMBLY BACK TO McELROY. AFTER THE REPLACEMENT PARTS HAVE BEEN INSTALLED THE ASSEMBLY WILL BE PROOF TESTED AGAIN & RE-CERTIFIED.
3. APPROX. WEIGHT = 317.5 LBS



3/8" - 1 TON BOLT TYPE
ANCHOR SHACKLE

1 TON CARBON EYE HOOK W/LATCH

2"X 13' SINGLE PLY NYLON SLING
W/ALUMINUM HARDWARE

VIEW **A**
TYP

McElroy Manufacturing Parts List

Part Number: 8261000-0101 3,000 lb Pipe Handling Spreader Bar Assembly

Please visit <https://fusion.mcelroy.com/parts> to purchase parts or for more information.

