



McElroy Manufacturing, Inc.  
The leader by design.  
Tulsa, Oklahoma U.S.A.

DRAWN: PJD

CHECK: JAL

APPRVD: SWB

DATE: 10/08/10

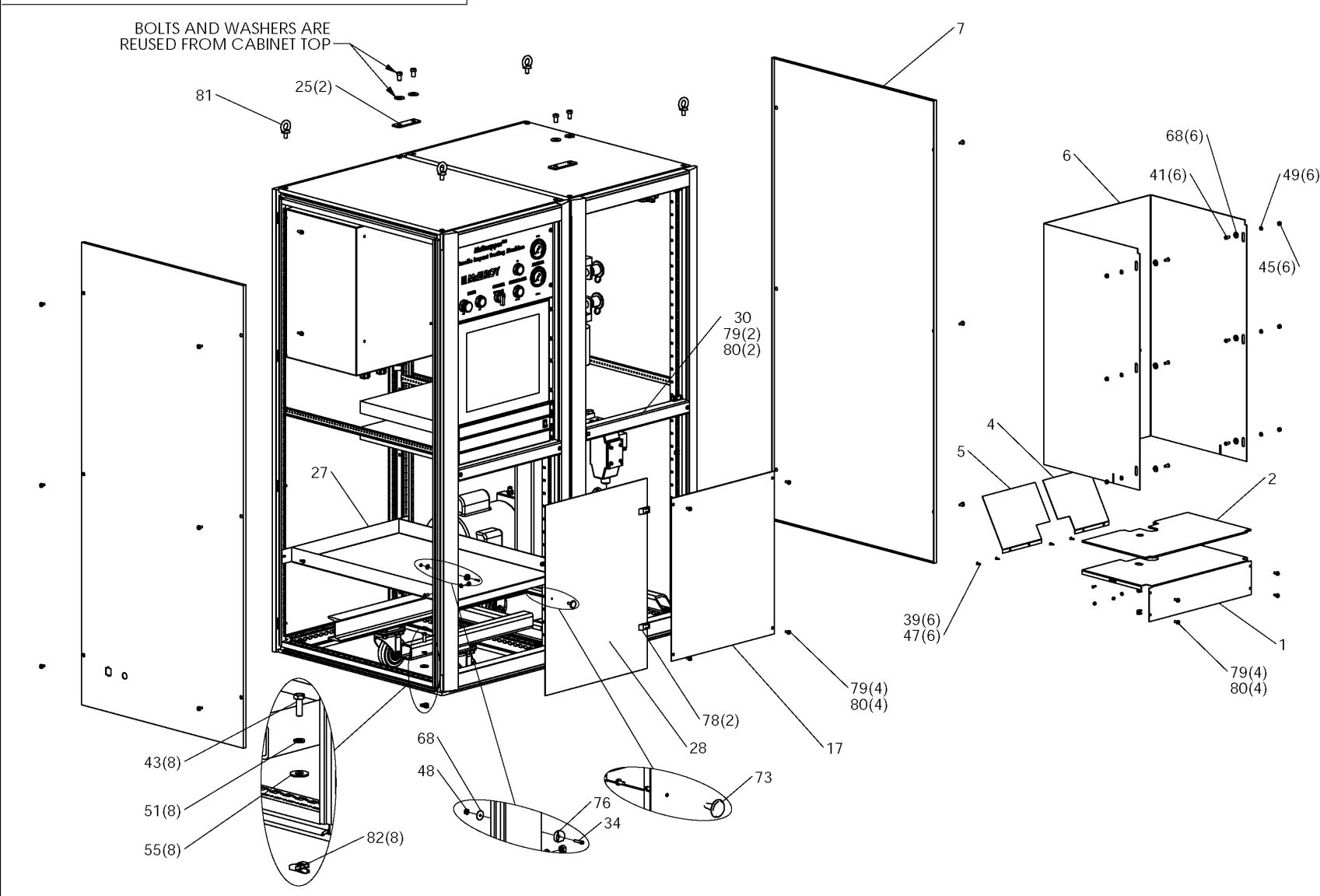
SHT No: 8A

REV No:

PART No: S00108

# McSnapper ASSEMBLY

NOTE: THIS DRAWING AND THE INFORMATION CONTAINED THEREIN IS THE CONFIDENTIAL AND PROPRIETARY PROPERTY OF McElroy Manufacturing, Inc. THE DRAWING IS NOT TO BE REPRODUCED IN ANY MANNER, SUBMITTED TO OUTSIDE PARTIES FOR EXAMINATION, OR USED DIRECTLY OR INDIRECTLY FOR THE PURPOSES OTHER THAN THOSE FOR WHICH IT WAS FURNISHED WITHOUT WRITTEN PERMISSION OF McElroy Manufacturing, Inc.





McElroy Manufacturing, Inc.  
The leader by design.  
Tulsa, Oklahoma U.S.A.

DRAWN: PJD

CHECK: JAL

APPRVD: SWB

DATE: 10/08/10

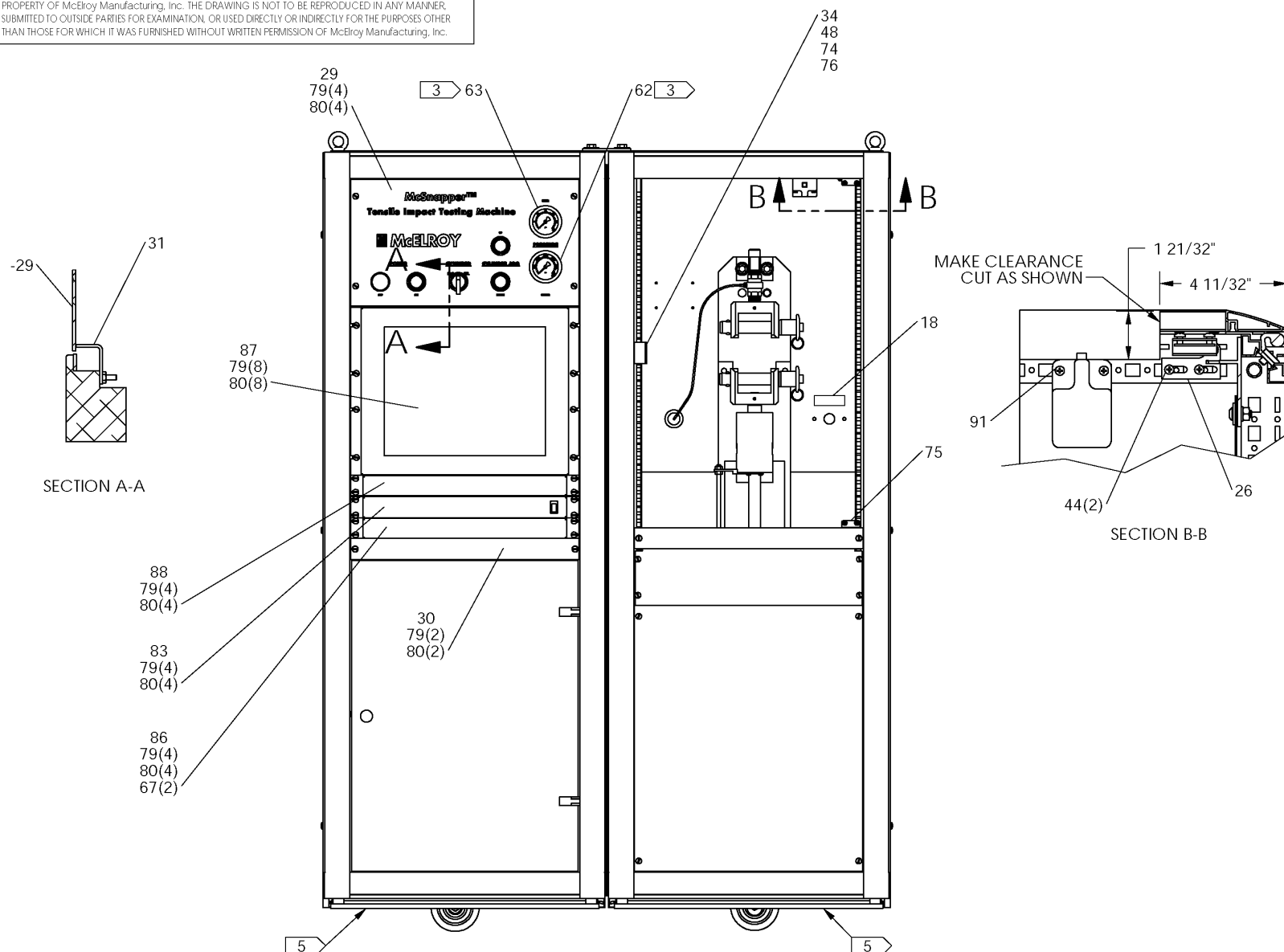
SHT No: 8B

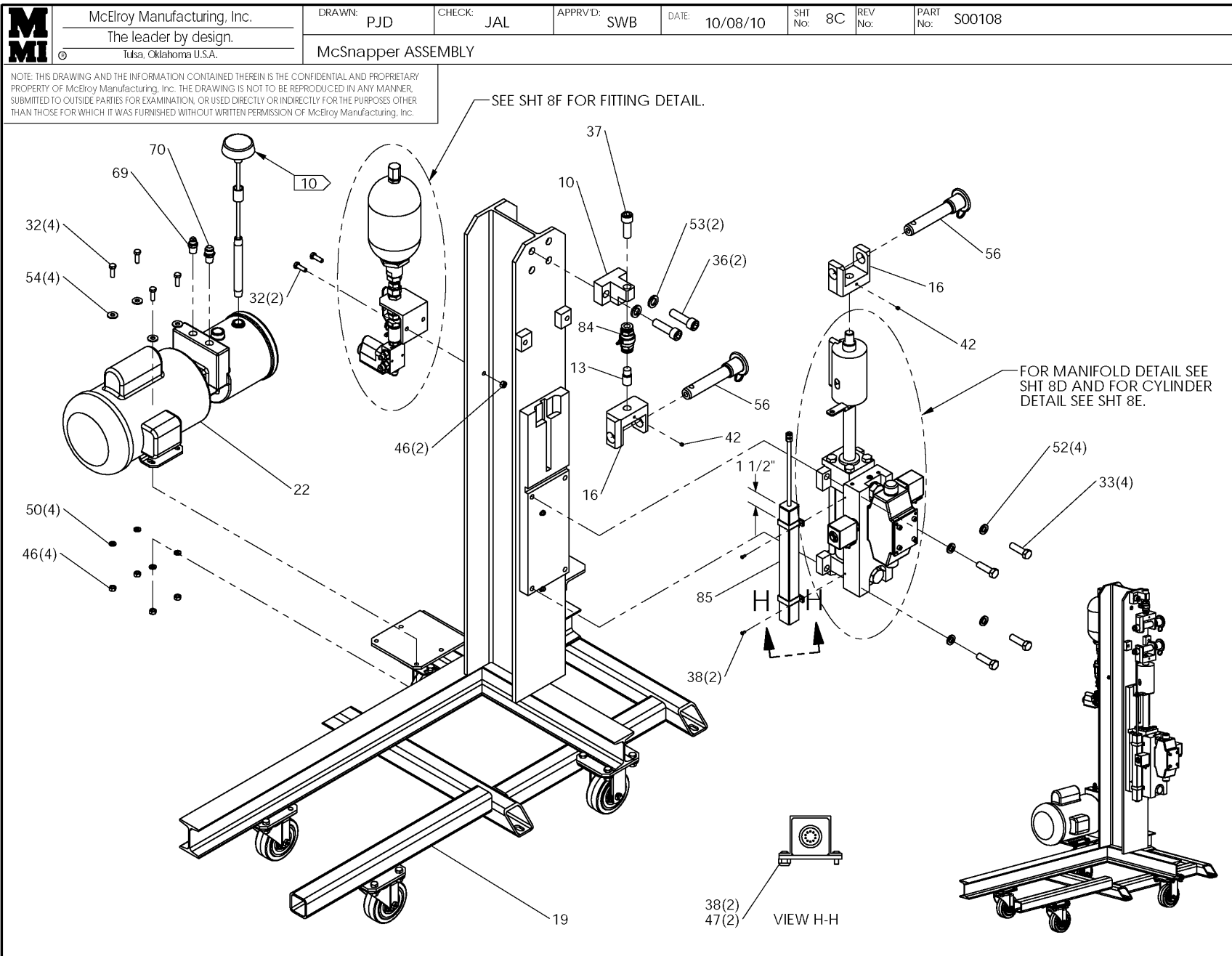
REV No:

PART No: S00108

# McSnapper ASSEMBLY

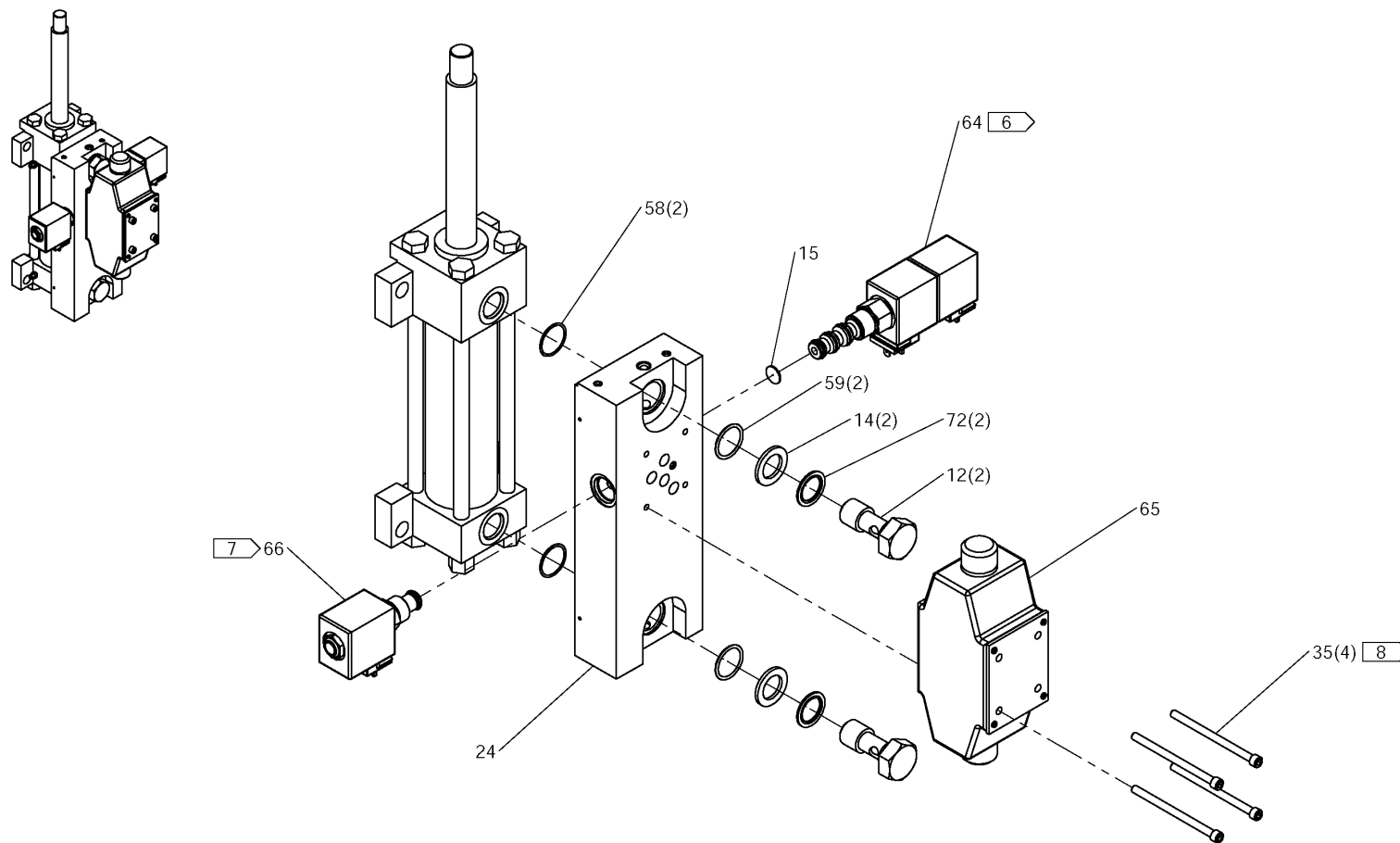
NOTE: THIS DRAWING AND THE INFORMATION CONTAINED THEREIN IS THE CONFIDENTIAL AND PROPRIETARY PROPERTY OF McElroy Manufacturing, Inc. THE DRAWING IS NOT TO BE REPRODUCED IN ANY MANNER, SUBMITTED TO OUTSIDE PARTIES FOR EXAMINATION, OR USED DIRECTLY OR INDIRECTLY FOR THE PURPOSES OTHER THAN THOSE FOR WHICH IT WAS FURNISHED WITHOUT WRITTEN PERMISSION OF McElroy Manufacturing, Inc.





## McSnapper ASSEMBLY

NOTE: THIS DRAWING AND THE INFORMATION CONTAINED THEREIN IS THE CONFIDENTIAL AND PROPRIETARY PROPERTY OF McElroy Manufacturing, Inc. THE DRAWING IS NOT TO BE REPRODUCED IN ANY MANNER, SUBMITTED TO OUTSIDE PARTIES FOR EXAMINATION, OR USED DIRECTLY OR INDIRECTLY FOR THE PURPOSES OTHER THAN THOSE FOR WHICH IT WAS FURNISHED WITHOUT WRITTEN PERMISSION OF McElroy Manufacturing, Inc.





McElroy Manufacturing, Inc.  
The leader by design.  
Tulsa, Oklahoma U.S.A.

DRAWN: PJD

CHECK: JAL

APPRVD: SWB

DATE: 10/08/10

SHT No: 8E

REV No:

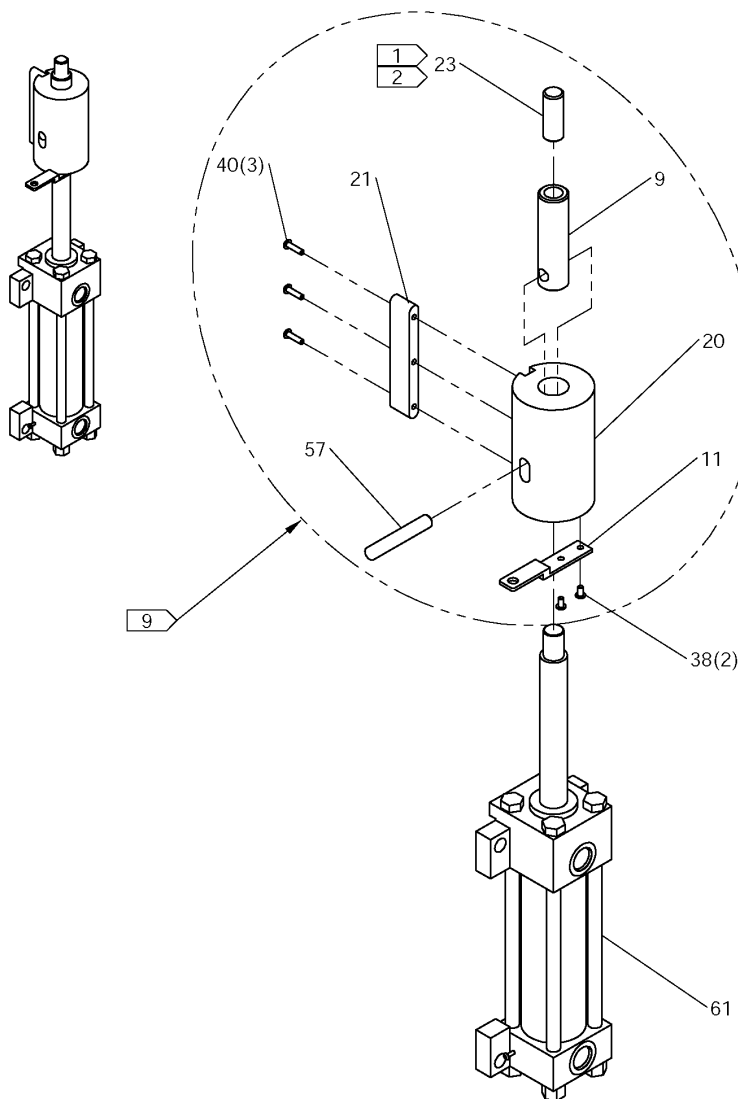
PART No: S00108

### McSnapper ASSEMBLY

NOTE: THIS DRAWING AND THE INFORMATION CONTAINED THEREIN IS THE CONFIDENTIAL AND PROPRIETARY PROPERTY OF McElroy Manufacturing, Inc. THE DRAWING IS NOT TO BE REPRODUCED IN ANY MANNER, SUBMITTED TO OUTSIDE PARTIES FOR EXAMINATION, OR USED DIRECTLY OR INDIRECTLY FOR THE PURPOSES OTHER THAN THOSE FOR WHICH IT WAS FURNISHED WITHOUT WRITTEN PERMISSION OF McElroy Manufacturing, Inc.

#### NOTES:

1. INSTALL WITH MEDIUM STRENGTH THREAD LOCKER.
2. LEAVE 11/16" THREAD ABOVE SURFACE OF S00313. NO THREAD LOCKING ON EXPOSED THREADS.
3. ATTACH FITTINGS AND HOSE PRIOR TO INSTALLATION IN PANEL. RELIEVE CASE PRESSURE PER MANUFACTURERS INSTRUCTIONS IF NECESSARY.
4. USE PLASTIC MOUNTING PLATE INCLUDED WITH SWITCH.
5. REMOVE FLOOR PANEL AND DISCARD.
6. NUT INSTALLATION TORQUE: 4-6 FT-LBS  
VALVE INSTALLATION TORQUE: 10-12 FT-LBS
7. NUT INSTALLATION TORQUE: 30 IN-LBS  
VALVE INSTALLATION TORQUE: 190 IN-LBS
8. INSTALLATION TORQUE: 10-12 FT-LBS, USE 3/16 HEX WRENCH.
9. ASSEMBLE THESE COMPONENTS SEPARATELY, THEN THREAD ONTO MEB00053 UNTIL SNUG. ADJUST ROD OF MEB00053 UNTILL ASSEMBLY IS ORIENTED AS SHOWN.
10. DISASSEMBLE EXISTING CAP TO INSERT ITEM-22 "DIPSTICK" THEN REASSEMBLE.





McElroy Manufacturing, Inc.  
The leader by design.  
Tulsa, Oklahoma U.S.A.

DRAWN: PJD

CHECK: JAL

APPRVD: SWB

DATE: 10/08/10

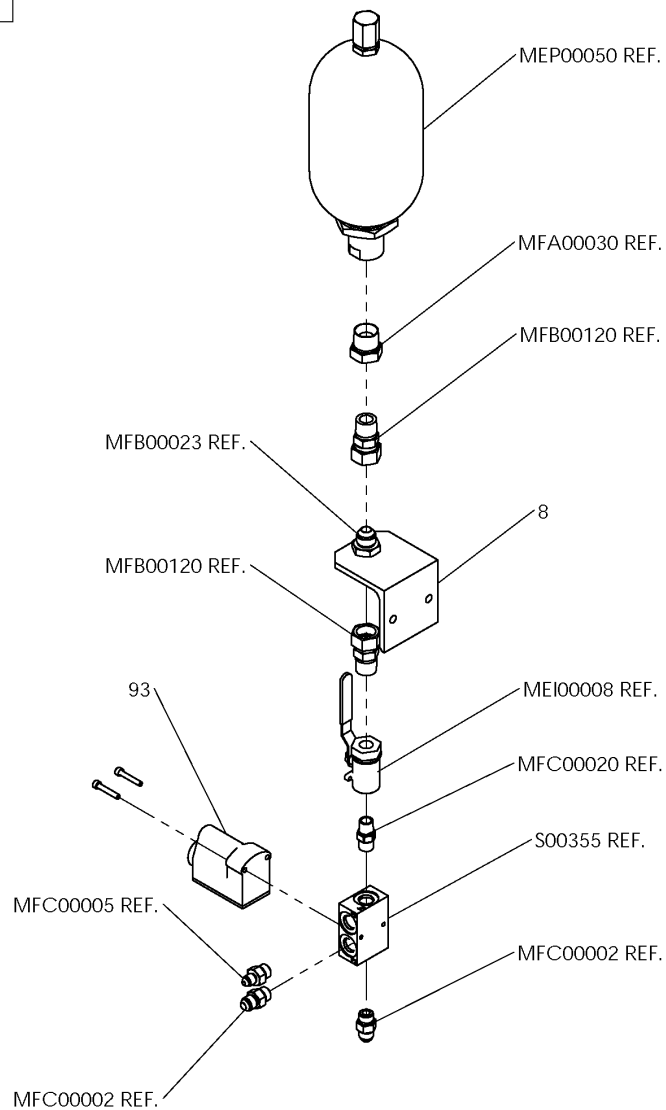
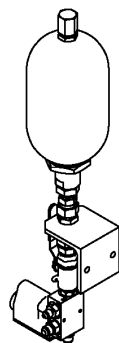
SHT No: 8F

REV No:

PART No: S00108

# McSnapper ASSEMBLY

NOTE: THIS DRAWING AND THE INFORMATION CONTAINED THEREIN IS THE CONFIDENTIAL AND PROPRIETARY PROPERTY OF McElroy Manufacturing, Inc. THE DRAWING IS NOT TO BE REPRODUCED IN ANY MANNER, SUBMITTED TO OUTSIDE PARTIES FOR EXAMINATION, OR USED DIRECTLY OR INDIRECTLY FOR THE PURPOSES OTHER THAN THOSE FOR WHICH IT WAS FURNISHED WITHOUT WRITTEN PERMISSION OF McElroy Manufacturing, Inc.



## McElroy Manufacturing Parts List

**Part Number:** S00108 McSnapper Assembly

**Part Number S00108 Component List**

Item	Component	Description	Quantity	Unit	Price
1	S00222	Lower Drop Panel	1.0	EA	0.00
2	S00231	Lower Drop Panel Mat	1.0	EA	0.00
3	S00236	Tempered Glass Door	1.0	EA	0.00
4	S00237	Back Right Drop Panel	1.0	EA	0.00
5	S00238	Back Left Drop Panel	1.0	EA	0.00
6	S00239	Back Drop Panel	1.0	EA	0.00
7	S00241	Side Wall Mod	1.0	EA	0.00
8	S00308	Accumulator Mounting Bracket	1.0	EA	0.00
9	S00313	Impact Chamber Shaft	1.0	EA	0.00
10	S00315	Load Cell Bracket	1.0	EA	0.00
11	S00318	Transducer Shaft Mounting PL	1.0	EA	0.00
12	S00323	Manifold Mounting Bolt	2.0	EA	0.00
13	S00324	Clevis&load Cell Stud	1.0	EA	0.00
14	S00327	Manifold Mounting Bolt Washer	2.0	EA	0.00
15	S00328	Solenoid Valve Fixed Orifice	1.0	EA	0.00
16	S00331	2.6 Coupon Clevis	2.0	EA	0.00
17	S00343	Blanking Panel	1.0	EA	0.00
18	S02201	Cyl Speed Control Placard	1.0	EA	0.00
19	S00357	Cabinet Base Frame Weldment	1.0	EA	0.00
20	S00360	Impact Chamber Body	1.0	EA	0.00
21	S00361	Impact Chamber Key	1.0	EA	0.00
22	S00362	Hpu Modification Assy	1.0	EA	6,056.00
23	S00364	Stud	1.0	EA	0.00
24	S01801	Cylinder Manifold W/plugs	1.0	EA	0.00
25	S01901	Cabinet Splicing Plate	2.0	EA	0.00
26	S00242	Upper Glass Door Support	1.0	EA	0.00
27	S02402	Electrical Cabinet Shelf	1.0	EA	0.00
28	S02403	Electronics Cabinet Door	1.0	EA	0.00
29	S02501	McSnapper Opr Panel Assy	1.0	EA	0.00
30	S02901	1U Divider Bar	2.0	EA	0.00
31	S03201	Panel Stiffening Brace	1.0	EA	0.00
32	MAB00033	5/16-18NCX1LG Hhcs	6.0	EA	0.41
33	MAB00107	1/2-13NCX2-1/2LG Hhcs	4.0	EA	1.76
34	MAC00052	1/4-20NCX5/8LG Shcs PL	2.0	EA	0.48
35	MAC00058	1/4-20NCX1-3/4LG Shcs PL	4.0	EA	1.05
36	MAC00166	5/8-11NCX2-1/4LG Shcs	2.0	EA	0.00
37	MAC00403	5/8-18NVX1-1/2LG Shcs	1.0	EA	0.00
38	MAE00009	#6-32NCX3/8LG Bhscs	6.0	EA	0.38
39	MAE00018	#8-32NCX1/2LG Bhscs	6.0	EA	0.00
40	MAE00025	#10-24NCX3/4LG Bhscs	3.0	EA	0.77
41	MAE00032	1/4-20NCX5/8LG Bhscs	6.0	EA	0.41
42	MAG00035	1/4-20NCX1/4LG Skt Set Scr	2.0	EA	0.00
43	MAH00114	M8X1.25X20MM LG Hhcs	8.0	EA	0.48
44	MAN00074	#10-32NFX7/8LG Phpdms SS	2.0	EA	0.00
45	MBA00005	1/4-20NC Fnsh Hex Nut Stl PL	6.0	EA	0.32
46	MBA00006	5/16-18NC Fnsh Hex Nut Stl PL	6.0	EA	0.33
47	MBC00003	#8-32NC Mach Scr Nyl Lck Nut	8.0	EA	0.38
48	MBC00048	1/4-20NC Fnsh Hex Nyl Lck Nut	2.0	EA	0.00
49	MBE00005	1/4 Reg Splt Lck Washer Stl PL	6.0	EA	0.10
50	MBE00006	5/16 Reg Splt Lck Wshr Stl PL	6.0	EA	0.11
51	MBE00007	3/8 Reg Splt Lck Wshr Stl PL	8.0	EA	0.12
52	MBE00009	1/2 Reg Splt Lck Washer Stl PL	4.0	EA	0.16
53	MBE00011	5/8 Reg Splt Lck Washer Stl PL	2.0	EA	0.61
54	MBF00006	5/16TY 'a' Wide FL Wshr Stl PL	4.0	EA	0.11
55	MBF00007	3/8 TY 'a' Wide FL Wshr Stl PL	8.0	EA	0.11

## McElroy Manufacturing Parts List

**Part Number:** S00108 McSnapper Assembly

56	MCE00025	1DIA X 4.00 Grip Detent Pin	2.0 EA	257.00
57	MCI00010	1/2 DIA X 3 LG Dowel Pin	1.0 EA	5.59
58	MDL00118	O-ring	2.0 EA	0.00
59	MDL00122	O-ring	2.0 EA	0.57
60	MEP00080	Pressure Switch	1.0 EA	0.00
61	MEB00053	2B X 6S X 1R Hyd Cyl	1.0 EA	0.00
62	MEE00031	3000PSI Pressure Gauge	1.0 EA	0.00
63	MEE00032	30PSI Pressure Gauge	1.0 EA	0.00
64	MEF00019	Directional Valve	1.0 EA	0.00
65	MEF00032	VSD05M Directional Valve	1.0 EA	0.00
66	MEF00033	Directional Valve	1.0 EA	0.00
67	MLA00248	#10-32NF Cage Nut	2.0 EA	0.00
68	MFB00005	4MPT/4MJIC Elbow	8.0 EA	8.74
69	MFB00026	6MPT/6MJIC Adapter	1.0 EA	3.76
70	MFB00035	6MPT/8MJIC Adapter	1.0 EA	0.00
71	MAP00004	#8X1-1/2 LG Phpsms	2.0 EA	0.00
72	MFL00025	Stat-o-seal	2.0 EA	0.00
73	MJP00014	Knob W/screw	1.0 EA	14.84
74	MJP00044	Magnetic Latch	1.0 EA	0.00
75	MJP00028	Glass Door Hinge Kit	1.0 EA	0.00
76	MJP00029	Magnet	2.0 EA	0.00
77	S01601	McSnapper Hyd/plb Schem	1.0 EA	0.00
78	MLA00086	Hinge Kit	2.0 EA	0.00
79	MLA00087	Fixing Screws	32.0 EA	0.00
80	MLA00088	Captv Nuts	32.0 EA	0.00
81	MLA00236	Lifting Eye Bolt Set	1.0 ST	0.00
82	MLA00240	M8 Cage Nuts	8.0 EA	0.00
83	MLN00468	1U 19" Rackmount Power Strip	1.0 EA	0.00
84	MQB00009	Quartz Force Link	1.0 EA	14,349.00
85	MQB00048	9" Resistive Linear Transducer	1.0 EA	1,774.00
86	MQE00112	1U Rckmnt Keyboard W/trackball	1.0 EA	0.00
87	MQE00113	17"8U Rckmnt Lcd W/touchscreen	1.0 EA	0.00
88	MQE00114	1U Rackmount Computer	1.0 EA	0.00
89	S02301	McSnapper Electrical Assy&sch	1.0 EA	0.00
90	S02601	McSnapper Wiring Panel Assy	1.0 EA	0.00
91	S02101	Door Interlock Switch Spacer	1.0 EA	0.00

Please visit <https://fusion.mcelroy.com/parts> to purchase parts or for more information.