



McElroy Manufacturing, Inc.

The leader by design.

Tulsa, Oklahoma U.S.A.

DRAWN:

ERA

CHECK:

BWJ

APPROV'D:

DWP

DATE:

02/17/11

SHT

No: 1A

REV

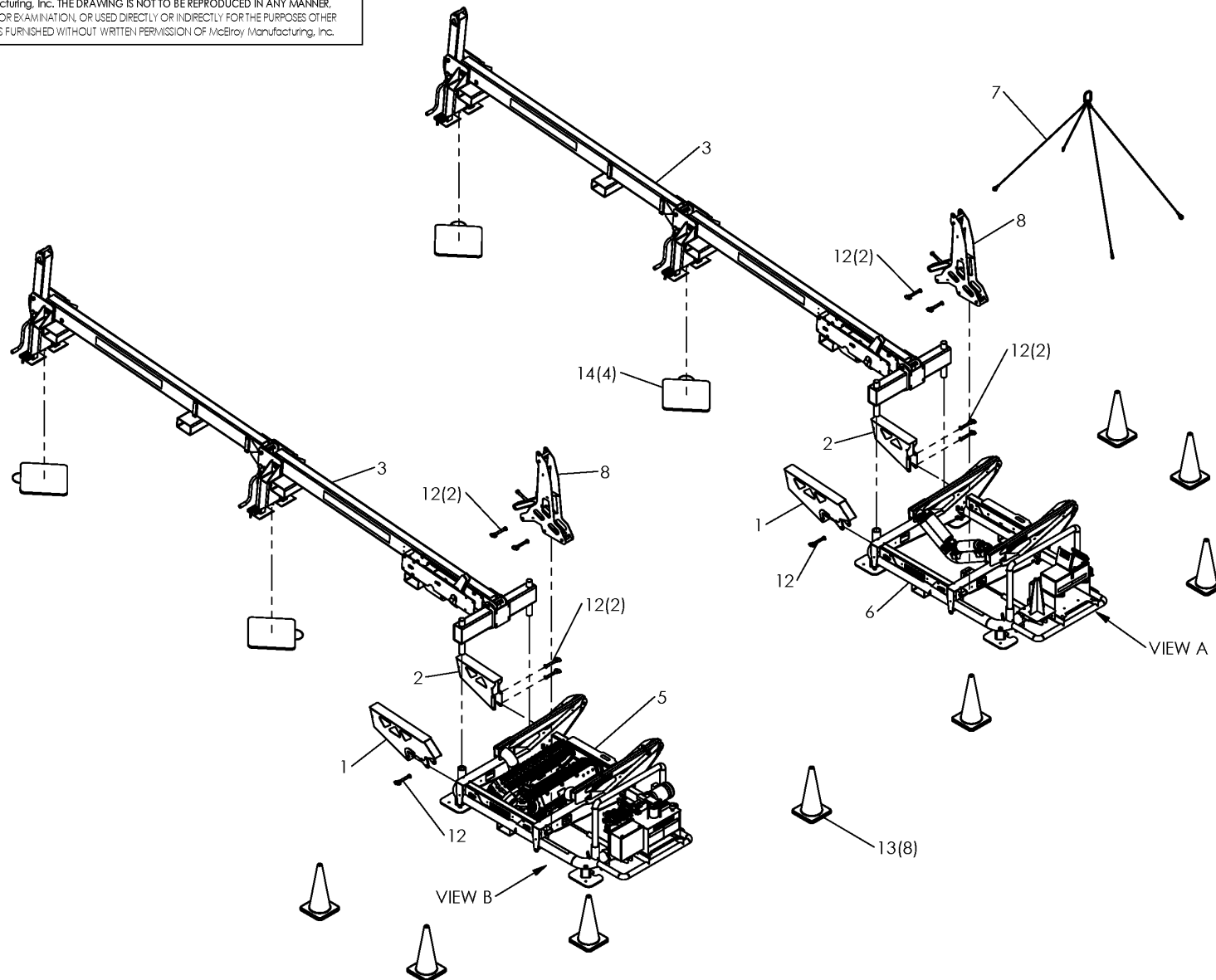
No: D

PART

No: 4834001

MegaMc™ Polyhorse™ 220-240V, 50/60Hz, 3Ph ASSEMBLY

NOTE: THIS DRAWING AND THE INFORMATION CONTAINED THEREIN IS THE CONFIDENTIAL AND PROPRIETARY PROPERTY OF McElroy Manufacturing, Inc. THE DRAWING IS NOT TO BE REPRODUCED IN ANY MANNER, SUBMITTED TO OUTSIDE PARTIES FOR EXAMINATION, OR USED DIRECTLY OR INDIRECTLY FOR THE PURPOSES OTHER THAN THOSE FOR WHICH IT WAS FURNISHED WITHOUT WRITTEN PERMISSION OF McElroy Manufacturing, Inc.





McElroy Manufacturing, Inc.

The leader by design.

Tulsa, Oklahoma U.S.A.

DRAWN: ERA

CHECK: BWJ

APPRVD: DWP

DATE: 02/17/11

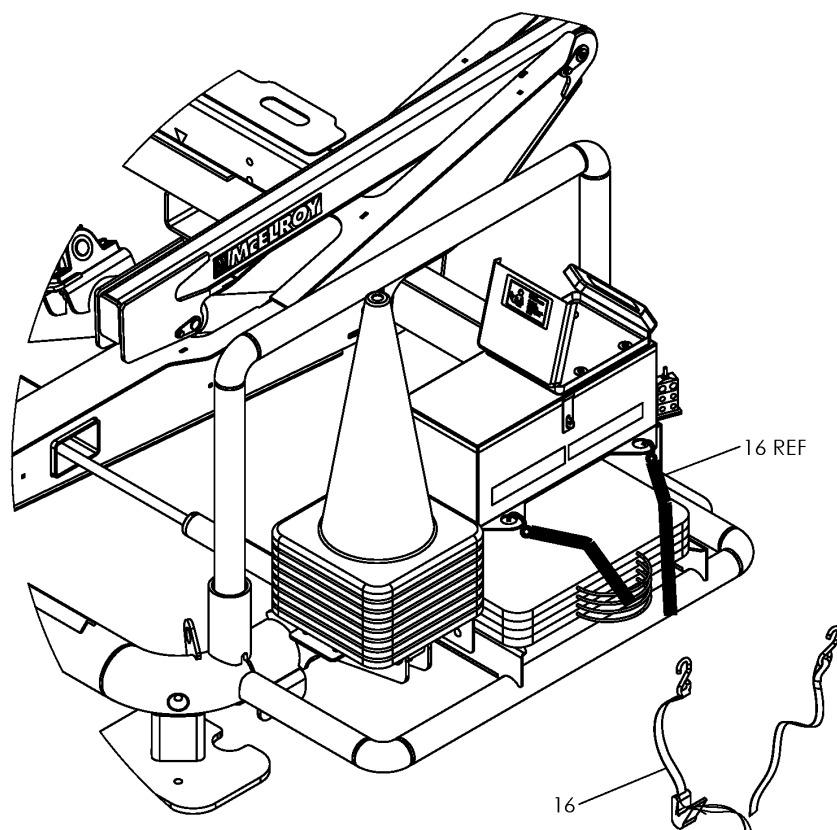
SHT No: 1 B

REV No: D

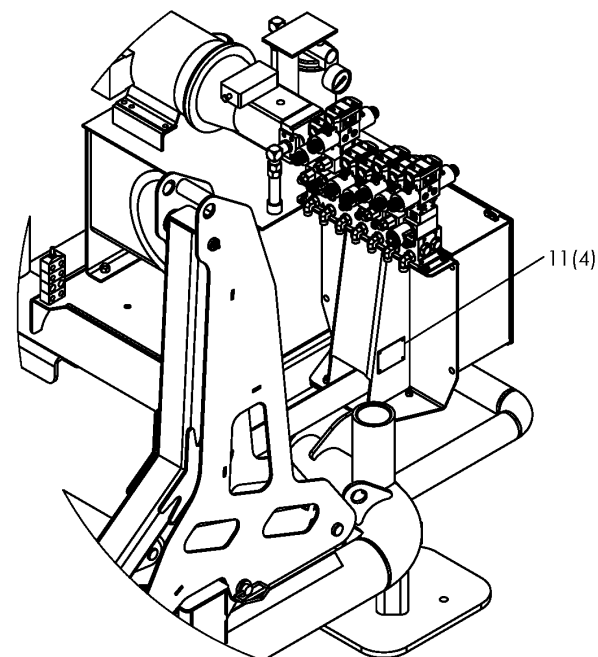
PART No: 4834001

MegaMc™ Polyhorse™ 220-240V, 50/60Hz, 3Ph ASSEMBLY

NOTE: THIS DRAWING AND THE INFORMATION CONTAINED THEREIN IS THE CONFIDENTIAL AND PROPRIETARY PROPERTY OF McElroy Manufacturing, Inc. THE DRAWING IS NOT TO BE REPRODUCED IN ANY MANNER, SUBMITTED TO OUTSIDE PARTIES FOR EXAMINATION, OR USED DIRECTLY OR INDIRECTLY FOR THE PURPOSES OTHER THAN THOSE FOR WHICH IT WAS FURNISHED WITHOUT WRITTEN PERMISSION OF McElroy Manufacturing, Inc.



VIEW A
CONES AND PADS
STOWED IN ROLLER UNIT



VIEW B
NAMEPLATE
ON TRACKED UNIT



McElroy Manufacturing, Inc.

The leader by design.

Tulsa, Oklahoma U.S.A.

DRAWN:

ERA

CHECK:

BWJ

APPRVD:

DWP

DATE:

02/17/11

SHT

No: 1C

REV

No: D

PART

No:

4834001

MegaMc™ Polyhorse™ 220-240V, 50/60Hz, 3Ph ASSEMBLY

NOTE: THIS DRAWING AND THE INFORMATION CONTAINED THEREIN IS THE CONFIDENTIAL AND PROPRIETARY PROPERTY OF McElroy Manufacturing, Inc. THE DRAWING IS NOT TO BE REPRODUCED IN ANY MANNER, SUBMITTED TO OUTSIDE PARTIES FOR EXAMINATION, OR USED DIRECTLY OR INDIRECTLY FOR THE PURPOSES OTHER THAN THOSE FOR WHICH IT WAS FURNISHED WITHOUT WRITTEN PERMISSION OF McElroy Manufacturing, Inc.

NOTES:

1. THE RELIEF VALVE CARTRIDGE IN VALVE MANIFOLD NEEDS TO BE SET ALL THE WAY IN (CLOCKWISE) USING A 5/16" ALLEN WRENCH AND 9/16" END WRENCH. THIS WILL ACHIEVE A PRESSURE SETTING OF 3000 psi. LOCK THE JAM NUT ON THE RELIEF VALVE AFTERWARDS. AFTER FILLING HPU WITH FLUID, START HPU, AND ALLOW PUMP TO BUILD PRESSURE. PUMP PRESSURE SHOULD BE SET AT 2500 psi. TURN THE PRESSURE ADJUSTMENT CLOCKWISE TO INCREASE PRESSURE AND COUNTER CLOCKWISE TO DECREASE PRESSURE. LOCK ADJUSTMENT JAM NUT.
2. CONNECT THE EXTENSION HOSES TO THE TRACKED PIPE STAND AND INTERCONNECT THE MALE AND FEMALE COUPLINGS ON THE OTHER END OF THE EXTENSION HOSES (DO NOT CONNECT HOSES TO THE ROLLER PIPE STAND YET). OPERATE EACH FUNCTION SWITCH BACK AND FORTH SEVERAL TIMES TO PURGE THE AIR. CONNECT THE EXTENSION HOSES TO THE ROLLER PIPE STAND. DISCONNECT THE DISPENSER AND LOWERING ARM CYLINDERS AND INTERCONNECT THE MALE AND FEMALE COUPLINGS. OPERATE PIPE DISPENSER SWITCH BACK AND FORTH SEVERAL TIMES TO PURGE THE AIR. RECONNECT THE HOSES TO CYLINDERS AND OPERATE PIPE DISPENSER IN BOTH DIRECTIONS SEVERAL TIMES. CHECK HYDRAULIC FLUID LEVEL AFTER FILLING ALL CYLINDERS. FILL TO FULL WITH ALL CYLINDERS RETRACTED.
3. ONCE SYSTEM PRESSURE IS SET AND EACH FUNCTION HAS BEEN OPERATED BACK AND FORTH SEVERAL TIMES TO PURGE THE AIR, THE FLOW CONTROL VALVES CAN BE SET AS FOLLOWS:
 - a. TRACK TROLLEY TO 16 SEC FOR FULL TOWARD AND AWAY CYCLE.
 - b. ROLLER TROLLEY TO 16 SEC FOR FULL TOWARD AND AWAY CYCLE.
 - c. TRACK BOOM- SAME UP/DOWN SPEED AS ROLLER BOOM.
4. ADJUST PIPE DISPENSER SEQUENCE VALVE USING A 3/16" ALLEN WRENCH AND 11/16" END WRENCH. BACK THE ADJUSTMENT ALL THE WAY OUT AND TURN TWO TURNS IN (CLOCKWISE). THIS WILL ACHIEVE A PRESSURE SETTING OF 1200 PSI. LOCK THE JAM NUT ON THE SEQUENCE VALVE AFTERWARDS.
5. STOW THE TRACK AND ROLLER UNITS IN SHIPPING CONFIGURATION.
 - a. RAISE THE TRACK BOOM SLIGHTLY SO FORKS WILL CLEAR BOTTOM STRUCTURAL TUBE.
 - b. CENTER TRACK AND ROLLER TROLLEY SO THAT ARROWS LINE UP.
6. STOW LIFTING SLING, PENDANT AND PENDANT CORD IN TOOLBOX. AFFIX COVER ON PENDANT CORD RECEPTACLE ON CONTROL BOX.
7. STOW OUTRIGGER PADS UNDER TOOLBOX. COIL EXTENSION HOSE SET AND SET ON TOP OF OUTRIGGER PADS, WITH QUICK DISCONNECTS IN CENTER OF COIL. DO **NOT** CONNECT EXTENSION HOSE QUICK DISCONNECT ENDS TOGETHER. SECURE WITH RATCHET STRAP HOOKED TO TOOLBOX BRACKET LUGS, PASS THROUGH PAD HANDLE LOOPS AND UNDER FRAME BAR.
8. WHEN NOT CONNECTED, ENGAGE COVERS ON QUICK DISCONNECTS.
9. COIL DISPENSER EXTENSION HOSES AND HANG ON TROLLEY ELBOW OF EACH PIPE STAND.
10. COIL POWER CABLE AND STOW UNDER HPU.
11. STACK SAFETY CONES ON HOLDER ON ROLLER PIPE STAND.

McElroy Manufacturing Parts List

Part Number: 4834001 MegaMc Polyhorse 220-240V, 50/60Hz, 3Ph Assembly

Part Number 4834001 Component List

| Item | Component | Description | Quantity | Unit | Price |
|------|-----------|--|----------|------|----------|
| 1 | 4834501 | Long Pipe Transfer Wld | 2.0 | EA | 1,622.00 |
| 2 | 4834601 | Short Pipe Transfer Wld | 2.0 | EA | 748.00 |
| 3 | 4834901 | MegaMc Polyhorse Rack Assembly | 2.0 | EA | 0.00 |
| 4 | 4836001 | MegaMc Polyhorse Electrical Assembly (Effective to 6/16/11) | 1.0 | EA | 0.00 |
| 4 | 4840801 | MegaMc Polyhorse 220-240V, 50/60Hz, 3Ph Electrical Assembly | 1.0 | EA | 0.00 |
| 5 | 4836801 | MegaMc Polyhorse 220-240V, 50/60Hz, 3Ph Tracked Pipe Stand Assembly | 1.0 | EA | 0.00 |
| 6 | 4836901 | MegaMc Polyhorse Roller Pipe Stand Assembly | 1.0 | EA | 0.00 |
| 7 | 4838601 | Trac Drv Pipe Stand Lift Sling | 1.0 | EA | 686.00 |
| 8 | 4838901 | MegaMc Polyhorse Lowering Arm Assembly | 2.0 | EA | 4,674.00 |
| 9 | 4839001 | MegaMc Polyhorse Plumbing Schematic | 1.0 | EA | 0.00 |
| 10 | 4839401 | MegaMc PolyHorse Operator's Manual | 1.0 | EA | 0.00 |
| 11 | MCK00005 | 1/8DIAX .462" Grip Blind Rivet | 4.0 | EA | 0.44 |
| 12 | MCK00083 | 1"X7"GRIP Length Hitch Pin | 10.0 | EA | 70.33 |
| 13 | MJQ00477 | 28" Orange Safety Cone | 8.0 | EA | 82.94 |
| 14 | MJQ00479 | 24X24X1 Uhmw Outrigger Pad | 4.0 | EA | 336.00 |
| 16 | MJD00031 | Ratchet Tie DOWN,1"X10',RED | 1.0 | PK | 97.12 |

Please visit <https://fusion.mcelroy.com/parts> to purchase parts or for more information.