



McElroy Manufacturing, Inc.

The leader by design.

Tulsa, Oklahoma U.S.A.

DRAWN:

ARB

CHECK:

TKD

APPRVD:

SWB

DATE:

10/20/06

SHT

No: 3A

REV

No: F

PART

No: DL6303

DataLogger® PACKAGE 120/240V, 60Hz, 1Ph W/RUGGED PPC

NOTE: THIS DRAWING AND THE INFORMATION CONTAINED THEREIN IS THE CONFIDENTIAL AND PROPRIETARY PROPERTY OF McElroy Manufacturing, Inc. THE DRAWING IS NOT TO BE REPRODUCED IN ANY MANNER, SUBMITTED TO OUTSIDE PARTIES FOR EXAMINATION, OR USED DIRECTLY OR INDIRECTLY FOR THE PURPOSES OTHER THAN THOSE FOR WHICH IT WAS FURNISHED WITHOUT WRITTEN PERMISSION OF McElroy Manufacturing, Inc.

#### NOTES:

1. PLACE ALL ITEMS GOING IN CASE ORGANIZER IN ZIP-LIP 10" x 12" PLASTIC BAG
2. ITEM 4 INCLUDES COMPUTER MANUAL, BATTERY CHARGER BATTERY, SNYC. CABLE.
3. OPTIONAL ACCESSORIES AND SPARES NOT SHOWN INCLUDE.

MQE00077 PRINTER

MKG00029 PRINTER BATTERY PACK

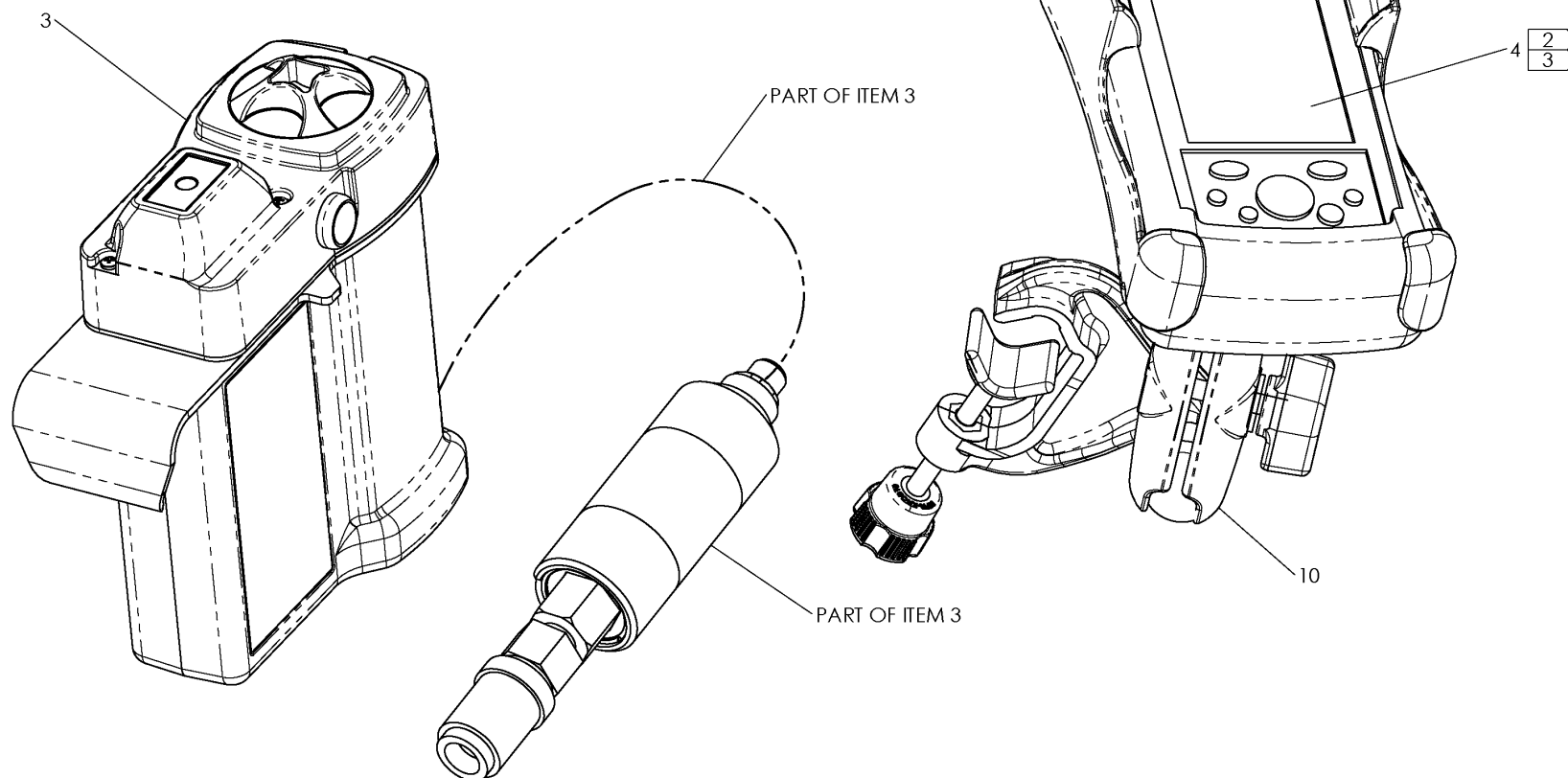
MQE00075 PRINTER A.C. ADAPTER


MQE00076 PRINTER PAPER

MQE00105 POWER BOOT MODULE (BATTERY)

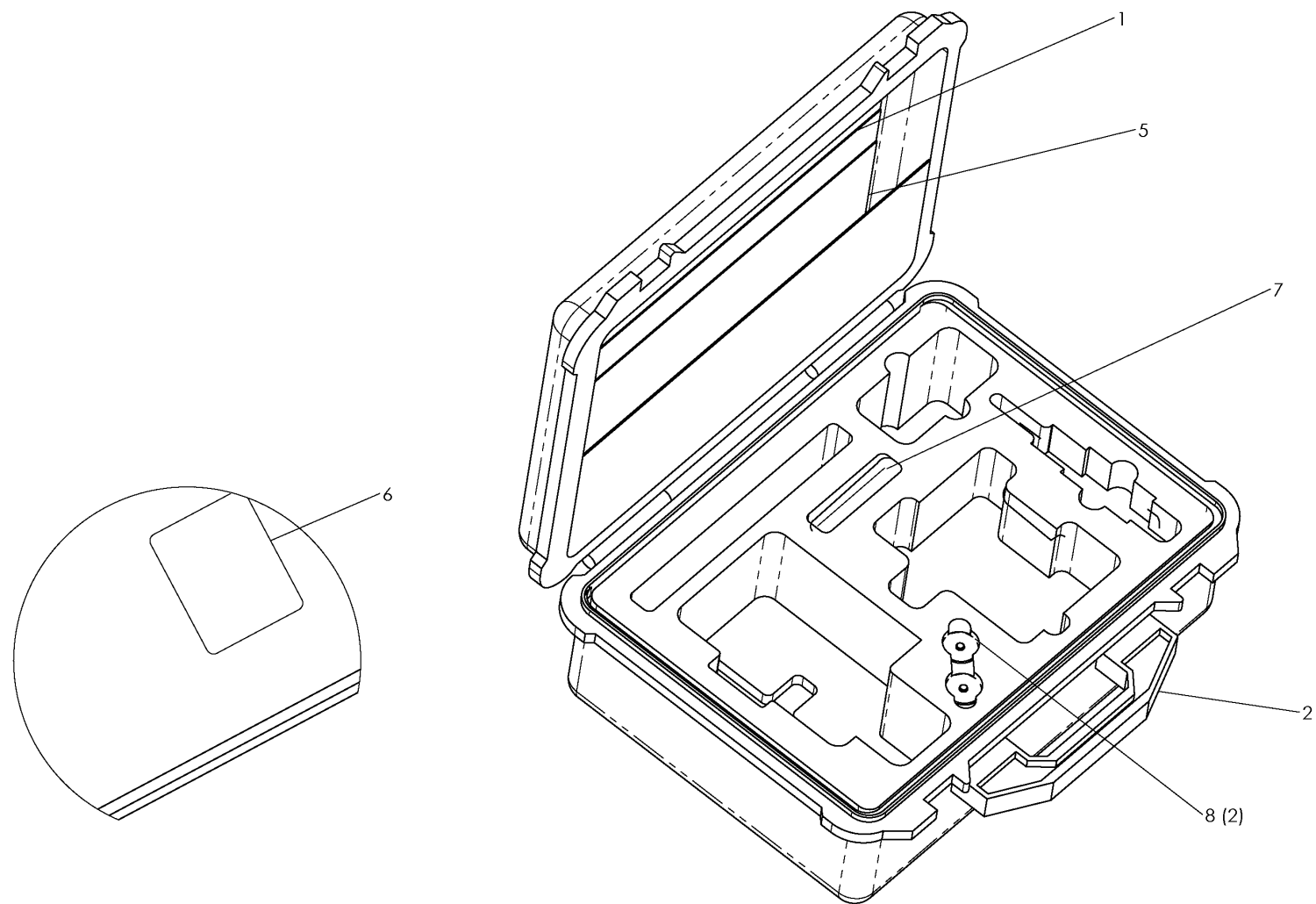
MQE00106 STYLUS PENS

MQE00110 TRANSFORMER (POWER SUPPLY) 5VDC 1A



	McElroy Manufacturing, Inc.	DRAWN: ARB	CHECK: TKD	APPRVD: SWB	DATE: 10/20/06	SHT No: 3B	REV No: F	PART No: DL6303
	The leader by design. Tulsa, Oklahoma U.S.A.	DataLogger® PACKAGE 120/240V, 60Hz, 1Ph W/RUGGED PPC						

NOTE: THIS DRAWING AND THE INFORMATION CONTAINED THEREIN IS THE CONFIDENTIAL AND PROPRIETARY PROPERTY OF McElroy Manufacturing, Inc. THE DRAWING IS NOT TO BE REPRODUCED IN ANY MANNER, SUBMITTED TO OUTSIDE PARTIES FOR EXAMINATION, OR USED DIRECTLY OR INDIRECTLY FOR THE PURPOSES OTHER THAN THOSE FOR WHICH IT WAS FURNISHED WITHOUT WRITTEN PERMISSION OF McElroy Manufacturing, Inc.



## McElroy Manufacturing Parts List

**Part Number:** DL6303 Datalogger 120/240V,60Hz,1Ph Package w/ Rugged PPC (Obsolete) (10/2006-5/2013)

### Part Number DL6303 Component List

Item	Component	Description	Quantity	Unit	Price
1	DL10501	Wired & Wireless Datalogger Operator's Manual (Effective to 8/16/10)	1.0	EA	0.00
1	DL6503	Datalogger with Rugged PPC Operator's Manual (Effective 10/28/08 to 5/20/10)	1.0	EA	0.00
2	DL6403	Case W/foam Insert&lid Orgnizr	1.0	EA	762.00
3	DL4501	Datalogger Module Housing Assembly	1.0	EA	0.00
4	DL7202	Rugged Pocket PC Mod	1.0	EA	0.00
5	DL1503	Tip Card	1.0	EA	0.00
6	DL6701	Case Label	1.0	EA	0.00
7	ADL6001	Connecting Fitting Kit (Effective 9/26/05 to 4/3/13)	1.0	EA	126.00
8	MKG00030	Alkaline Industrial D Cell	2.0	EA	0.00
9	MQE00109	Replaced by MQE00118&MQE00119 (Effective 10/20/09 to 6/6/11)	1.0	EA	0.00
10	MQE00118	Yoke Mount W/ Ball & Arm	1.0	EA	94.90
11	MQE00119	Recon Computer Holder	1.0	EA	40.12

Please visit <https://fusion.mcelroy.com/parts> to purchase parts or for more information.