



McElroy Manufacturing, Inc.  
The leader by design.  
Tulsa, Oklahoma U.S.A.

DRAWN:  
FAW

CHECK:  
LTD

APPR'D:  
JRP

DATE: 8/20/09

SHT  
No: 1A

REV  
No: F

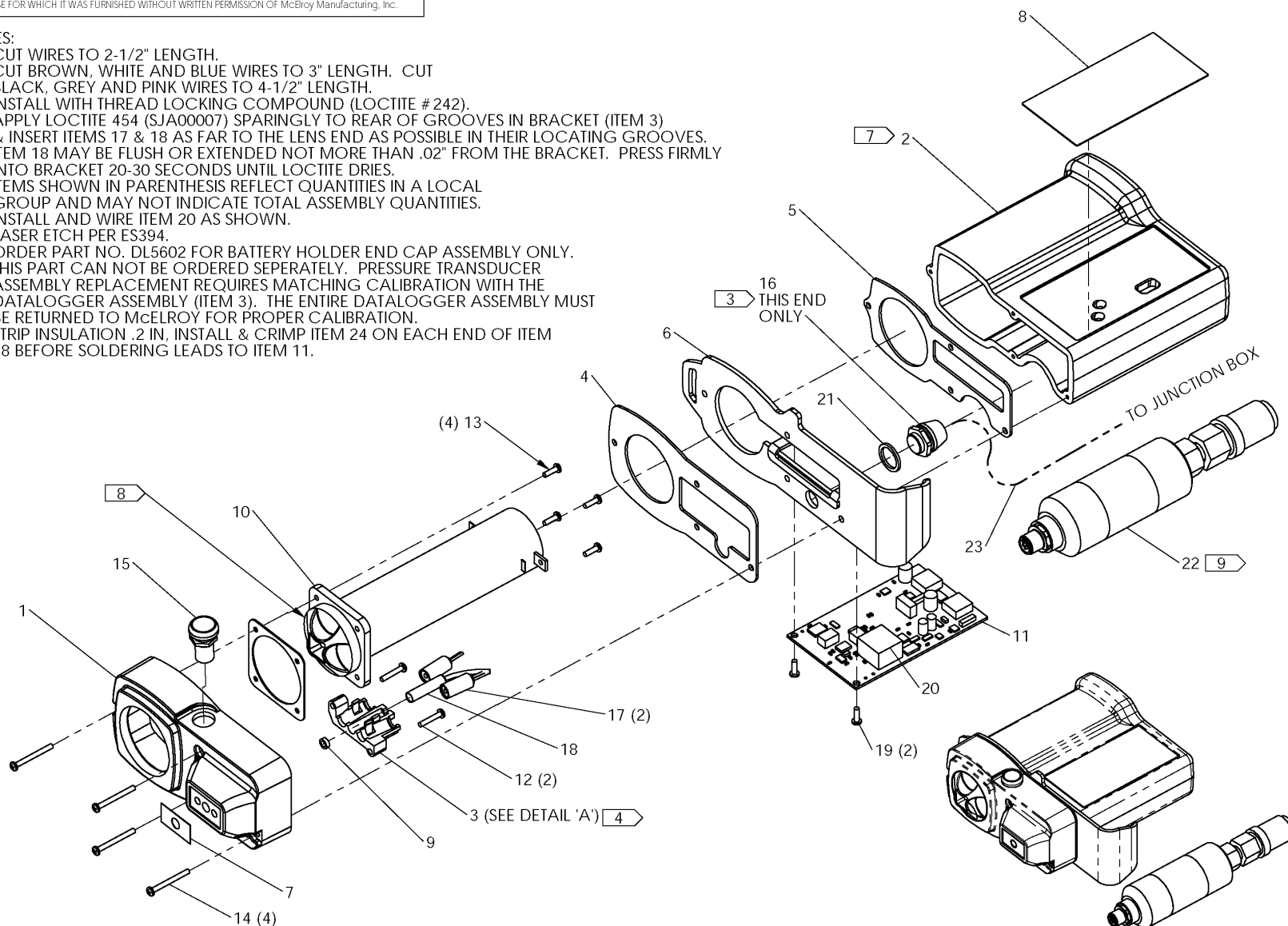
PART  
No: DL8101

# WIRED DATALOGGER HOUSING ASSEMBLY

NOTE: THIS DRAWING AND THE INFORMATION CONTAINED THEREIN IS THE CONFIDENTIAL AND PROPRIETARY PROPERTY OF McElroy Manufacturing, Inc. THE DRAWING IS NOT TO BE REPRODUCED IN ANY MANNER, SUBMITTED TO OUTSIDE PARTIES FOR EXAMINATION, OR USED DIRECTLY OR INDIRECTLY FOR THE PURPOSES OTHER THAN THOSE FOR WHICH IT WAS FURNISHED WITHOUT WRITTEN PERMISSION OF McElroy Manufacturing, Inc.

## NOTES:

1. CUT WIRES TO 2-1/2" LENGTH.
2. CUT BROWN, WHITE AND BLUE WIRES TO 3" LENGTH. CUT BLACK, GREY AND PINK WIRES TO 4-1/2" LENGTH.
3. INSTALL WITH THREAD LOCKING COMPOUND (LOCTITE # 242).
4. APPLY LOCTITE 454 (SJA00007) SPARINGLY TO REAR OF GROOVES IN BRACKET (ITEM 3) & INSERT ITEMS 17 & 18 AS FAR TO THE LENS END AS POSSIBLE IN THEIR LOCATING GROOVES. ITEM 18 MAY BE FLUSH OR EXTENDED NOT MORE THAN .02" FROM THE BRACKET. PRESS FIRMLY INTO BRACKET 20-30 SECONDS UNTIL LOCTITE DRIES.
5. ITEMS SHOWN IN PARENTHESIS REFLECT QUANTITIES IN A LOCAL GROUP AND MAY NOT INDICATE TOTAL ASSEMBLY QUANTITIES.
6. INSTALL AND WIRE ITEM 20 AS SHOWN.
7. LASER ETCH PER ES394.
8. ORDER PART NO. DL5602 FOR BATTERY HOLDER END CAP ASSEMBLY ONLY.
9. THIS PART CAN NOT BE ORDERED SEPERATELY. PRESSURE TRANSDUCER ASSEMBLY REPLACEMENT REQUIRES MATCHING CALIBRATION WITH THE DATALOGGER ASSEMBLY (ITEM 3). THE ENTIRE DATALOGGER ASSEMBLY MUST BE RETURNED TO McELROY FOR PROPER CALIBRATION.
10. STRIP INSULATION .2 IN. INSTALL & CRIMP ITEM 24 ON EACH END OF ITEM 18 BEFORE SOLDERING LEADS TO ITEM 11.





McElroy Manufacturing, Inc.  
The leader by design.  
Tulsa, Oklahoma U.S.A.

DRAWN:

FAW

CHECK:

LTD

APPRVD:

JRP

DATE:

8/20/09

SHT

No:

1B

REV

No:

F

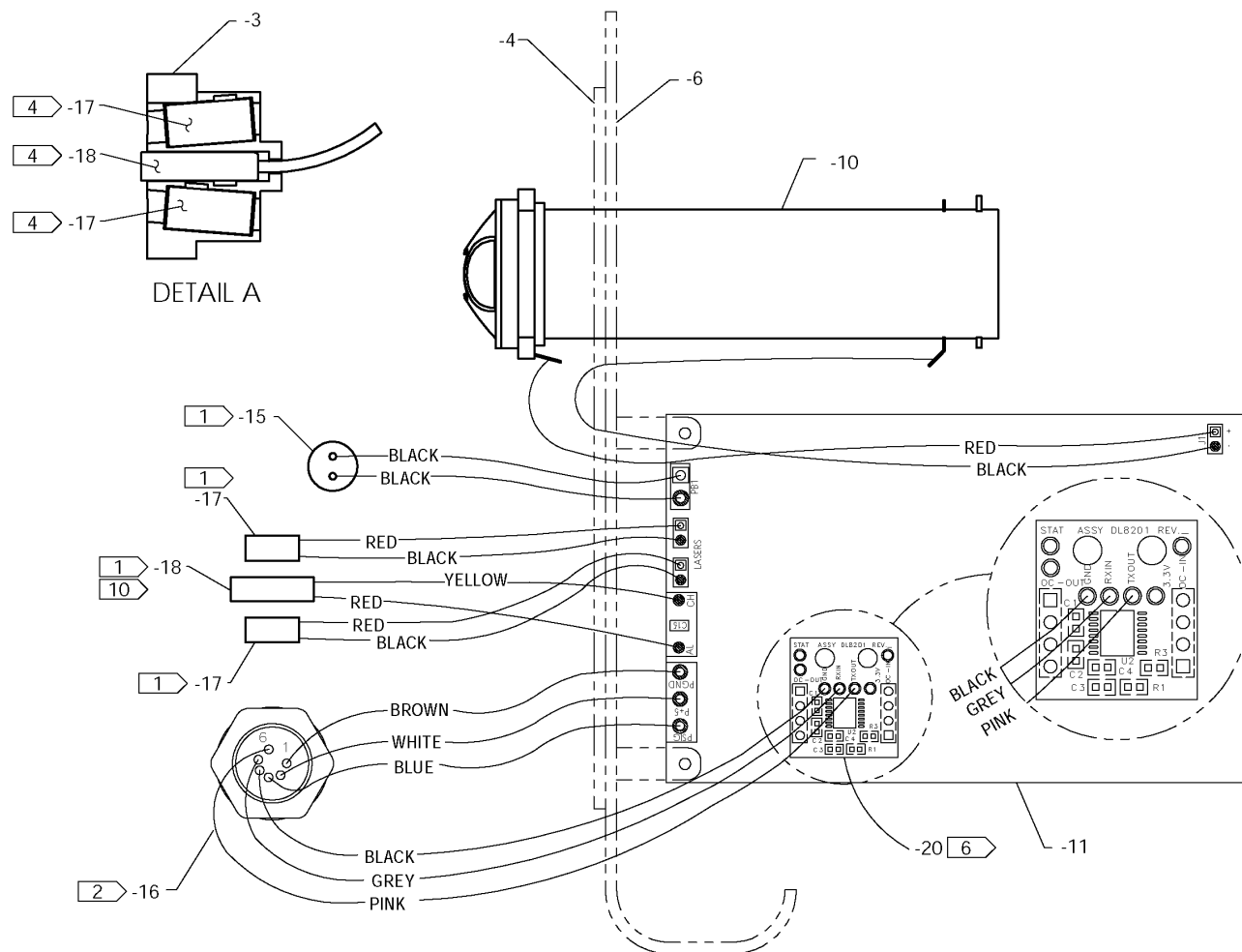
PART

No:

DL8101

# WIRED DATALOGGER HOUSING ASSEMBLY

NOTE: THIS DRAWING AND THE INFORMATION CONTAINED THEREIN IS THE CONFIDENTIAL AND PROPRIETARY PROPERTY OF McElroy Manufacturing, Inc. THE DRAWING IS NOT TO BE REPRODUCED IN ANY MANNER, SUBMITTED TO OUTSIDE PARTIES FOR EXAMINATION, OR USED DIRECTLY OR INDIRECTLY FOR THE PURPOSES OTHER THAN THOSE FOR WHICH IT WAS FURNISHED WITHOUT WRITTEN PERMISSION OF McElroy Manufacturing, Inc.



## McElroy Manufacturing Parts List

**Part Number:** DL8101 Wired DataLogger Housing Assembly

### Part Number DL8101 Component List

| Item | Component | Description   | Quantity | Unit | Price  |
|------|-----------|---|----------|------|--------|
| 1    | DL4604    | Green Top Housing   | 1.0      | EA   | 0.00   |
| 2    | DL4701    | Bottom Housing  | 1.0      | EA   | 0.00   |
| 3    | DL4801    | Sensor Bracket  | 1.0      | EA   | 0.00   |
| 4    | DL5001    | Top Gasket  | 1.0      | EA   | 0.00   |
| 5    | DL5101    | Bottom Gasket   | 1.0      | EA   | 0.00   |
| 6    | DL5203    | Clip Wld  | 1.0      | EA   | 0.00   |
| 7    | DL5301    | Aperture Label  | 1.0      | EA   | 0.00   |
| 8    | DL8401    | Wirel DL Label  | 1.0      | EA   | 0.00   |
| 9    | DL5501    | Sensor Seal   | 1.0      | EA   | 0.00   |
| 10   | DL5601    | Battery Holder Mod  | 1.0      | EA   | 0.00   |
| 11   | DL10001   | Wired DL Programmed Board Assy                              | 1.0      | EA   | 0.00   |
| 12   | IEP000086 | #4-20X5/8"LG Phil Pan HD Scr                                | 2.0      | EA   | 0.00   |
| 13   | MAH00194  | #4-20X3/8"LG Phil Pan HD Scr                                | 4.0      | EA   | 0.00   |
| 14   | MAJ00012  | #4-40NCX1-1/2LG Phpms Stl PL                                | 4.0      | EA   | 0.00   |
| 15   | MKC00040  | Push Button Switch  | 1.0      | EA   | 37.83  |
| 16   | MLF00109  | 6 Pin Female Eurofast Recep                                 | 1.0      | EA   | 0.00   |
| 17   | MLT00022  | Laser   | 2.0      | EA   | 0.00   |
| 18   | MQB00040  | I/r Temperature Sensor                                      | 1.0      | EA   | 0.00   |
| 19   | MAE00004  | #4-40NCX3/8LG Bhscs SS                                      | 2.0      | EA   | 0.42   |
| 20   | DL8201    | RS232 Interface Pcb Assy                                    | 1.0      | EA   | 0.00   |
| 21   | MBG00088  | M14X18X1.5 Seal Ring  | 1.0      | EA   | 0.00   |
| 22   | DL10201   | 4000 PSI Pressure Transducer Assembly                       | 1.0      | EA   | 0.00   |
| 23   | MLE00087  | 3.3m Wired DL Coiled Cord                                   | 1.0      | EA   | 443.00 |
| 23   | MLE00089  | 1.2m Press. Probe Coiled Cord (Effective 5/7/10 to 5/20/10) | 1.0      | EA   | 334.00 |
| 24   | MQF00006  | D-sub Pin   | 2.0      | EA   | 0.00   |

Please visit <https://fusion.mcelroy.com/parts> to purchase parts or for more information.