



McElroy Manufacturing, Inc.  
The leader by design.  
Tulsa, Oklahoma U.S.A.

DRAWN:

DJL

CHECK:

BWP

APPRV'D:

SWB

DATE:

9/20/96

DWG  
No:

8261000

SHT  
No:

2

REV  
No:

G

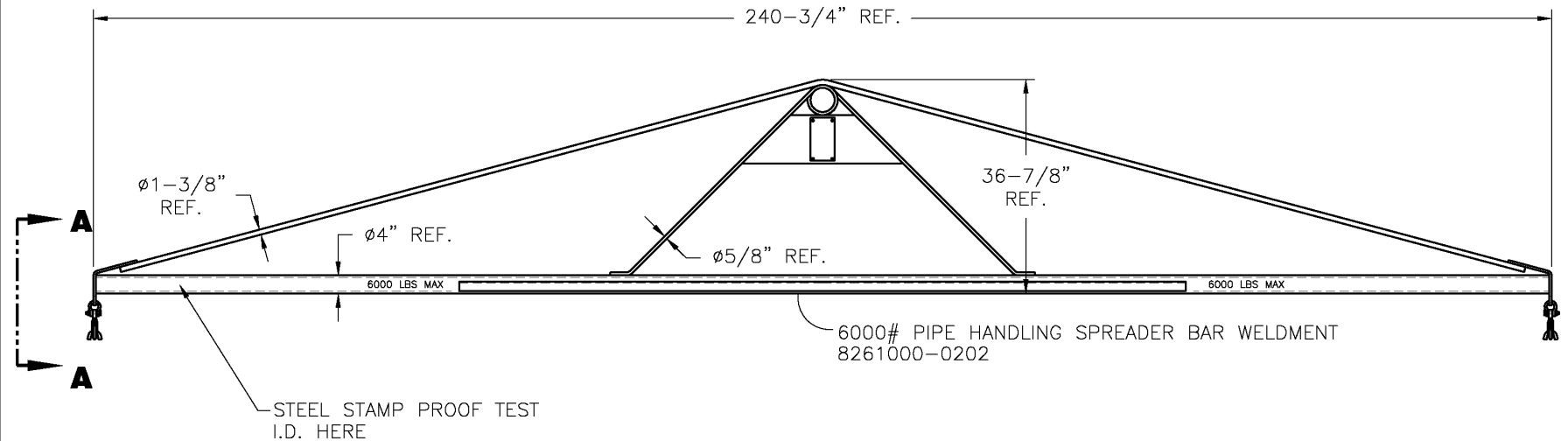
PART  
No:

8261000-0201

CAD  
No:

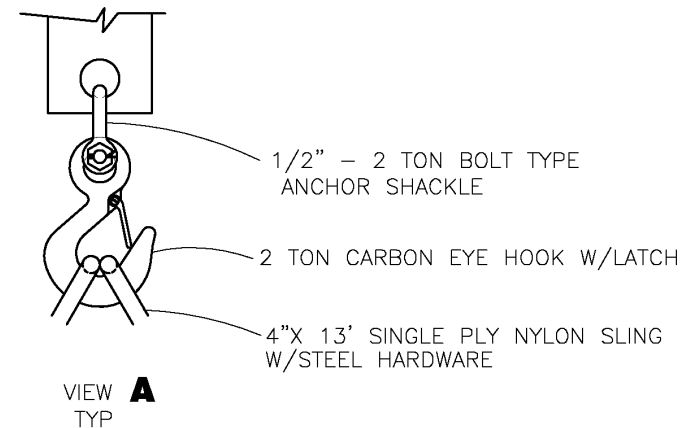
0201

NOTE: THIS DRAWING AND THE INFORMATION CONTAINED THEREIN IS THE CONFIDENTIAL AND PROPRIETARY PROPERTY OF McElroy Manufacturing, Inc. THE DRAWING IS NOT TO BE REPRODUCED IN ANY MANNER, SUBMITTED OUTSIDE PARTIES FOR EXAMINATION, OR USED DIRECTLY OR INDIRECTLY FOR THE PURPOSES OTHER THAN THOSE FOR WHICH IT WAS FURNISHED WITHOUT WRITTEN PERMISSION OF McElroy Manufacturing, Inc.



NOTES:

1. PROOF TEST TO 12000# BEFORE SHIPPING.
2. THIS ASSEMBLY IS PROOF TESTED & CERTIFIED TO LIFT THE SPECIFIED LOAD SHOWN ON THE DRAWING. REPLACEMENT PARTS ARE AVAILABLE ONLY BY SENDING THE ENTIRE SPREADER BAR ASSEMBLY BACK TO McELROY. AFTER THE REPLACEMENT PARTS HAVE BEEN INSTALLED THE ASSEMBLY WILL BE PROOF TESTED AGAIN & RE-CERTIFIED.
3. APPROX. WEIGHT = 474.4 LBS



McElroy Manufacturing Parts List

**Part Number:** 8261000-0201 6,000 lb Pipe Handling Spreader Bar Assembly

Please visit <https://fusion.mcelroy.com/parts> to purchase parts or for more information.

