



McElroy Manufacturing, Inc.
The leader by design.
Tulsa, Oklahoma U.S.A.

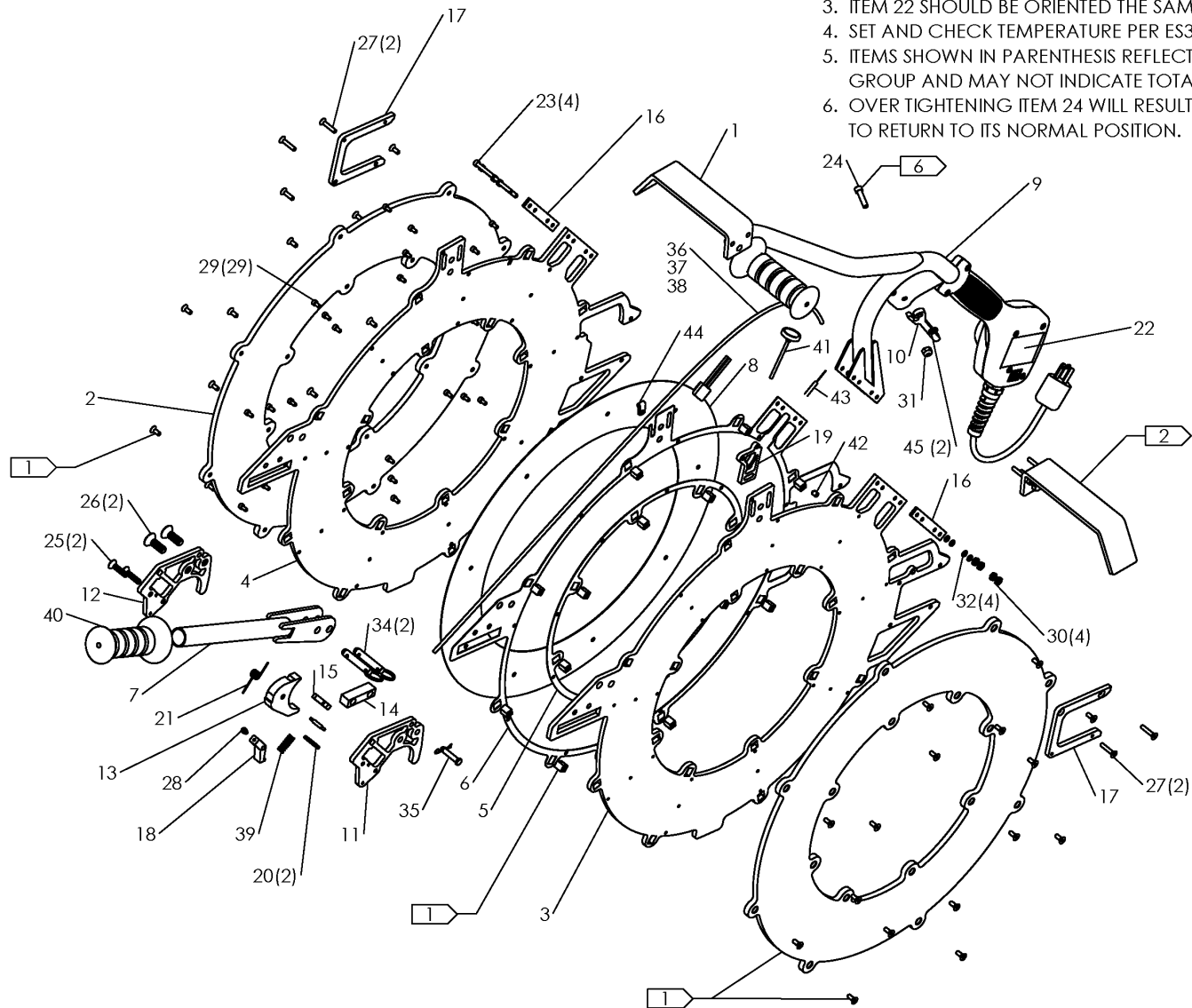
DRAWN: RLT CHECK: MRP APPRVD: PJD DATE: 1/18/18 SHT No: 1 REV No: C PART No: 2481301

Acrobat™ 500mm HEATER ASSEMBLY

NOTE: THIS DRAWING AND THE INFORMATION CONTAINED THEREIN IS THE CONFIDENTIAL AND PROPRIETARY PROPERTY OF McElroy Manufacturing, Inc. THE DRAWING IS NOT TO BE REPRODUCED IN ANY MANNER, SUBMITTED TO OUTSIDE PARTIES FOR EXAMINATION, OR USED DIRECTLY OR INDIRECTLY FOR THE PURPOSES OTHER THAN THOSE FOR WHICH IT WAS FURNISHED WITHOUT WRITTEN PERMISSION OF McElroy Manufacturing, Inc.

NOTES:

1. ITEMS PART OF BUTT PLATE KIT A2482201.
2. ITEMS PART OF STRIPPER BAR KIT A1852010.
3. ITEM 22 SHOULD BE ORIENTED THE SAME AS THE MMI LOGO.
4. SET AND CHECK TEMPERATURE PER ES390.
5. ITEMS SHOWN IN PARENTHESIS REFLECT QUANTITIES IN A LOCAL GROUP AND MAY NOT INDICATE TOTAL ASSEMBLY QUANTITIES.
6. OVER TIGHTENING ITEM 24 WILL RESULT IN A FAILURE OF THE LEVER TO RETURN TO ITS NORMAL POSITION.



McElroy Manufacturing Parts List

Part Number: 2481301 Obsolete & Replaced by 2497701 (Acrobat 500mm Heater Assembly)

Part Number 2481301 Component List

Item	Component	Description	Quantity	Unit	Price
1	A1852010	618(12/18) Stripper Bar Kit	1.0	EA	176.00
2	A2482201	500mm Heater Butt Plate Kit	1.0	EA	3,021.00
3	2481601	500MM Tapped Heater Body	1.0	EA	0.00
4	2481602	500MM C'bored Heater Body	1.0	EA	0.00
5	2481901	500MM Heater ID Spacer	1.0	EA	0.00
6	2481902	500MM Heater OD Spacer	1.0	EA	0.00
7	2482401	Auxillary Handle W/d	1.0	EA	152.00
8	2483001	500MM Heater Element	1.0	EA	1,437.00
9	2483401	Heater Handle/Controller Assembly	1.0	EA	0.00
10	2483701	Lever	1.0	EA	30.16
11	2483801	Tapped Latch Side Plate	1.0	EA	288.00
12	2483802	C'sunk Latch Side Plate	1.0	EA	218.00
13	2483901	Heater Latch	1.0	EA	219.00
14	2484001	Heater Latch Key	1.0	EA	70.20
15	2484101	Cable Stop	1.0	EA	86.00
16	2484201	Heater Gasket	2.0	EA	12.91
17	2484301	Htr Guide Rod Support Bracket	2.0	EA	71.40
18	2484401	Locking Piece	1.0	EA	144.00
19	2484501	Pivot Side Adjustment Block	1.0	EA	27.70
20	2484601	Cross Bar	2.0	EA	7.96
21	2484701	Torsion Spring Mod	1.0	EA	19.82
22	8163351	Model 2481301 Part NO Label	1.0	EA	98.60
23	MAC00041	#10-24NCX1-1/4LG Shcs PL	4.0	EA	0.69
24	MAC00055	1/4-20NCX1LG Shcs PL	1.0	EA	0.25
25	MAD00045	1/4-20NCX1LG Fhscs PL (Effective to 7/2/18)	2.0	EA	0.90
25	MAN00124	1/4-20NCX1-1/8LG Fhscs SS	2.0	EA	1.09
26	MAD00073	3/8-16NCX1LG Fhscs PL (Effective to 7/2/18)	2.0	EA	1.70
26	MAN00123	3/8-16NCX1-1/8LG Fhscs SS	2.0	EA	1.67
27	MAD00283	#10-24NCX1LG Fhscs PL	4.0	EA	0.18
28	MAN00013	#8-32NCX1/4LG Shcs SS	1.0	EA	0.39
29	MAN00023	#8-32NCX5/16LG Shcs SS	29.0	EA	0.49
30	MBA00004	#10-24NC Hex Nut Stl PL	4.0	EA	0.35
31	MBA00005	1/4-20NC Fhsh Hex Nut Stl PL (Effective 1/18/18 to 7/2/18)	1.0	EA	0.32
31	MBC00005	1/4-20NC Fhsh Hex Nyl Lck Nut	1.0	EA	0.39
32	MBE00004	#10 Reg Splt Lck Washer Stl PL	4.0	EA	0.10
33	MBE00005	1/4 Reg Splt Lck Washer Stl PL (Effective 1/18/18 to 7/2/18)	1.0	EA	0.10
34	MCE00060	3/8DIA X1-5/16 Grip Detent Pin	2.0	EA	6.21
35	MCF00070	1/4X1-1/16 Clevis W/ Hair Pin	1.0	EA	1.70
36	MDP00017	3/16 OD Bowden Conduit	3.75	FT	4.01
37	MDP00018	Inner Brake Wire	1.0	EA	8.70
38	MDP00019	Cut Cable End Cap	1.0	EA	0.18
39	MJE00079	Compression Spring	1.0	EA	2.07
40	MJJ00009	1" Black Gloss Hand Grip	1.0	EA	3.86
41	MJK00002	2.5LG,150-650DEG F Thermometer	1.0	EA	48.72
42	MJN00022	Press Fit Ball Detent	1.0	EA	0.00
43	MKI00003	1X3/16 316SS 100OHM Plat Rtd	1.0	EA	64.04
44	MLJ00119	Loop Clamp	1.0	EA	0.00
45	MBG00082	1/4" Nylon Washer	2.0	EA	0.46

Please visit <https://fusion.mcelroy.com/parts> to purchase parts or for more information.