

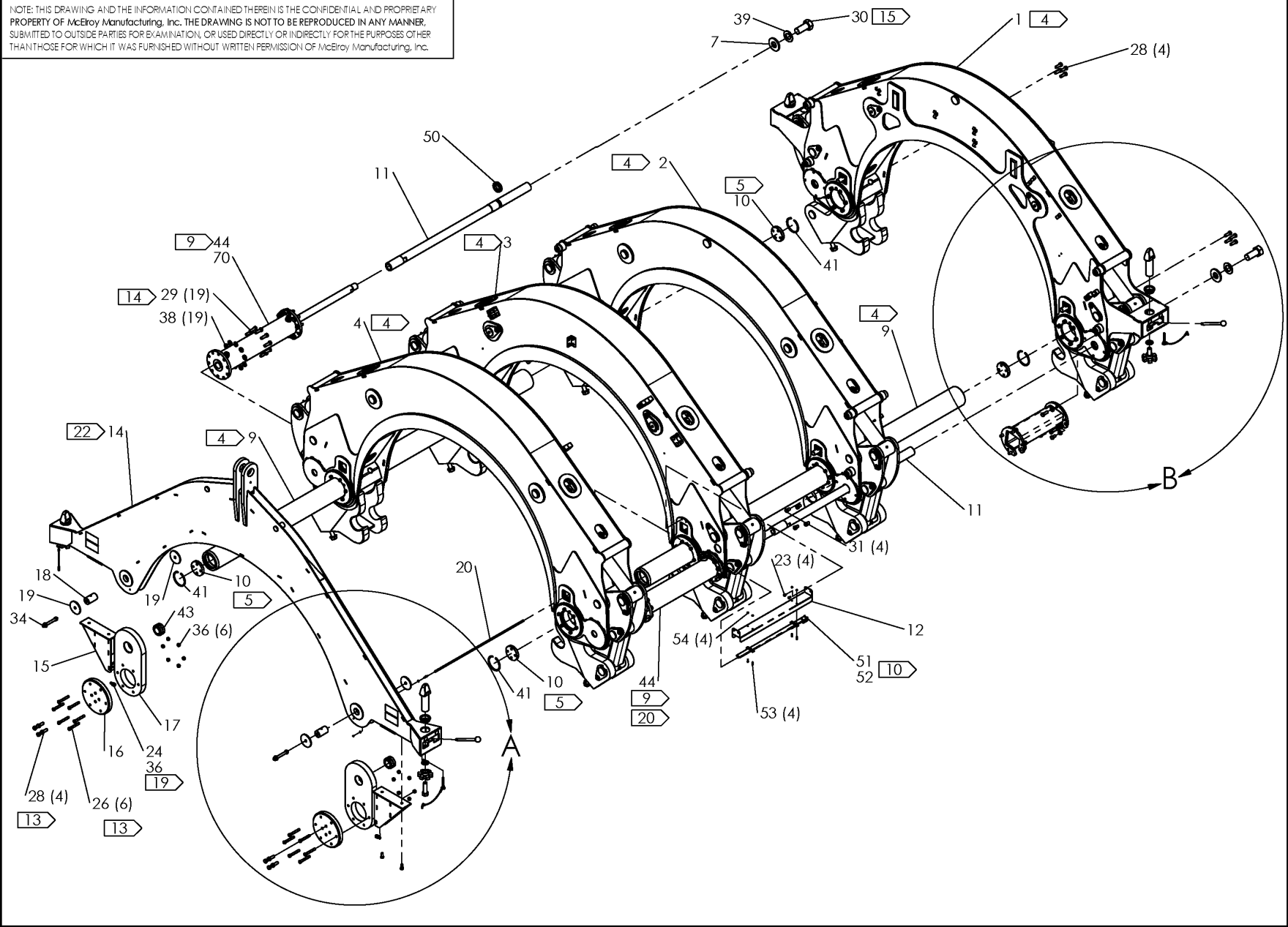


McElroy Manufacturing, Inc.  
The leader by design.  
Tulsa, Oklahoma U.S.A.

DRAWN: MRH    CHECK: TMT    APPRVD: JAL    DATE: 3/28/14    SHT No: 1A    REV No: D    PART No: 7800301

CARRIAGE ASSEMBLY

NOTE: THIS DRAWING AND THE INFORMATION CONTAINED THEREIN IS THE CONFIDENTIAL AND PROPRIETARY PROPERTY OF McElroy Manufacturing, Inc. THE DRAWING IS NOT TO BE REPRODUCED IN ANY MANNER, SUBMITTED TO OUTSIDE PARTIES FOR EXAMINATION, OR USED DIRECTLY OR INDIRECTLY FOR THE PURPOSES OTHER THAN THOSE FOR WHICH IT WAS FURNISHED WITHOUT WRITTEN PERMISSION OF McElroy Manufacturing, Inc.





McElroy Manufacturing, Inc.

The leader by design.

Tulsa, Oklahoma U.S.A.

DRAWN: MRH

CHECK: TMT

APPRVD: JAL

DATE: 3/28/14

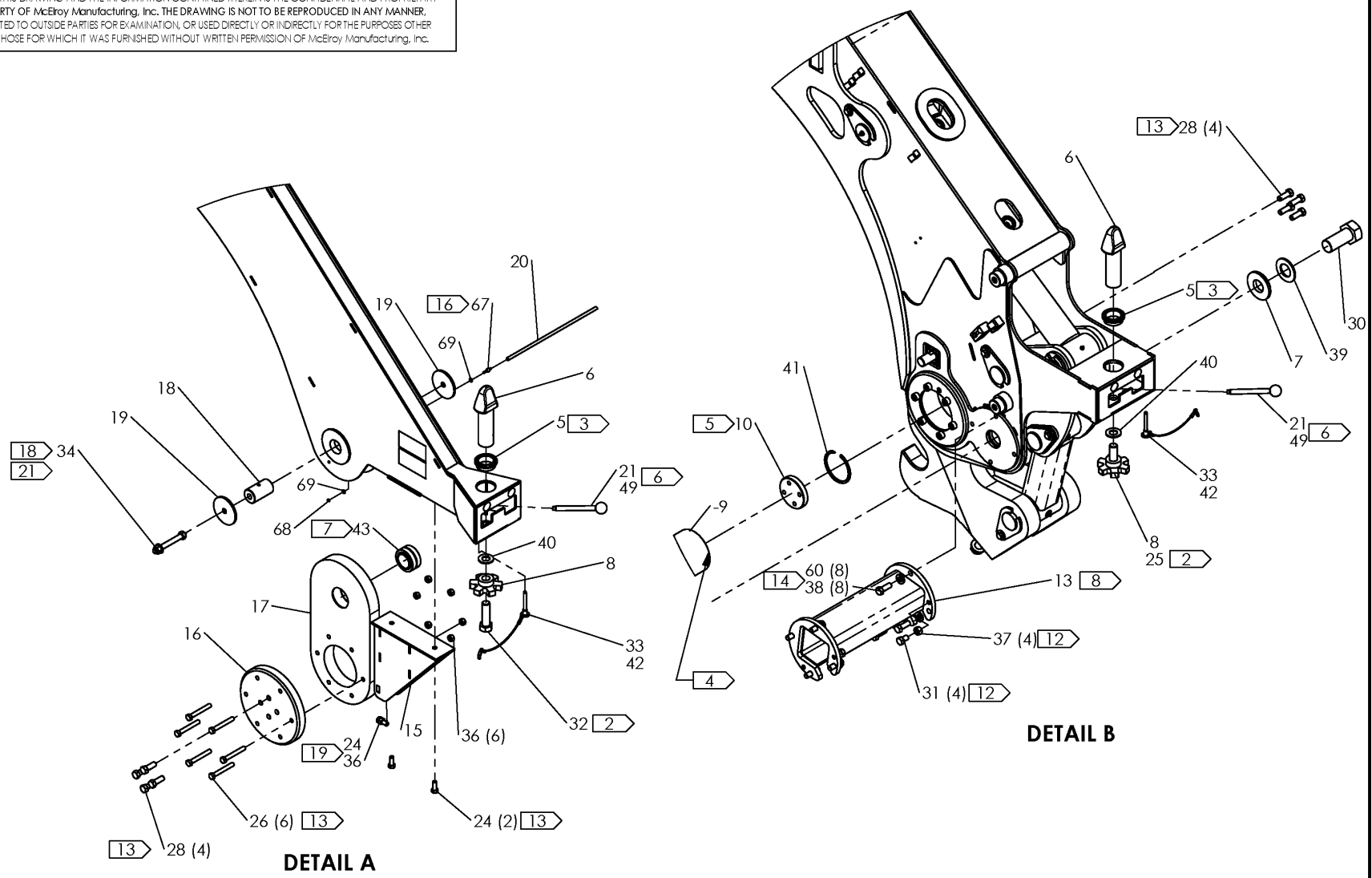
SHT No: 1B

REV No: D

PART No: 7800301

CARRIAGE ASSEMBLY

NOTE: THIS DRAWING AND THE INFORMATION CONTAINED THEREIN IS THE CONFIDENTIAL AND PROPRIETARY PROPERTY OF McElroy Manufacturing, Inc. THE DRAWING IS NOT TO BE REPRODUCED IN ANY MANNER, SUBMITTED TO OUTSIDE PARTIES FOR EXAMINATION, OR USED DIRECTLY OR INDIRECTLY FOR THE PURPOSES OTHER THAN THOSE FOR WHICH IT WAS FURNISHED WITHOUT WRITTEN PERMISSION OF McElroy Manufacturing, Inc.





McElroy Manufacturing, Inc.

The leader by design.

Tulsa, Oklahoma U.S.A.

DRAWN: MRH

CHECK: TMT

APPRVD: JAL

DATE: 3/28/14

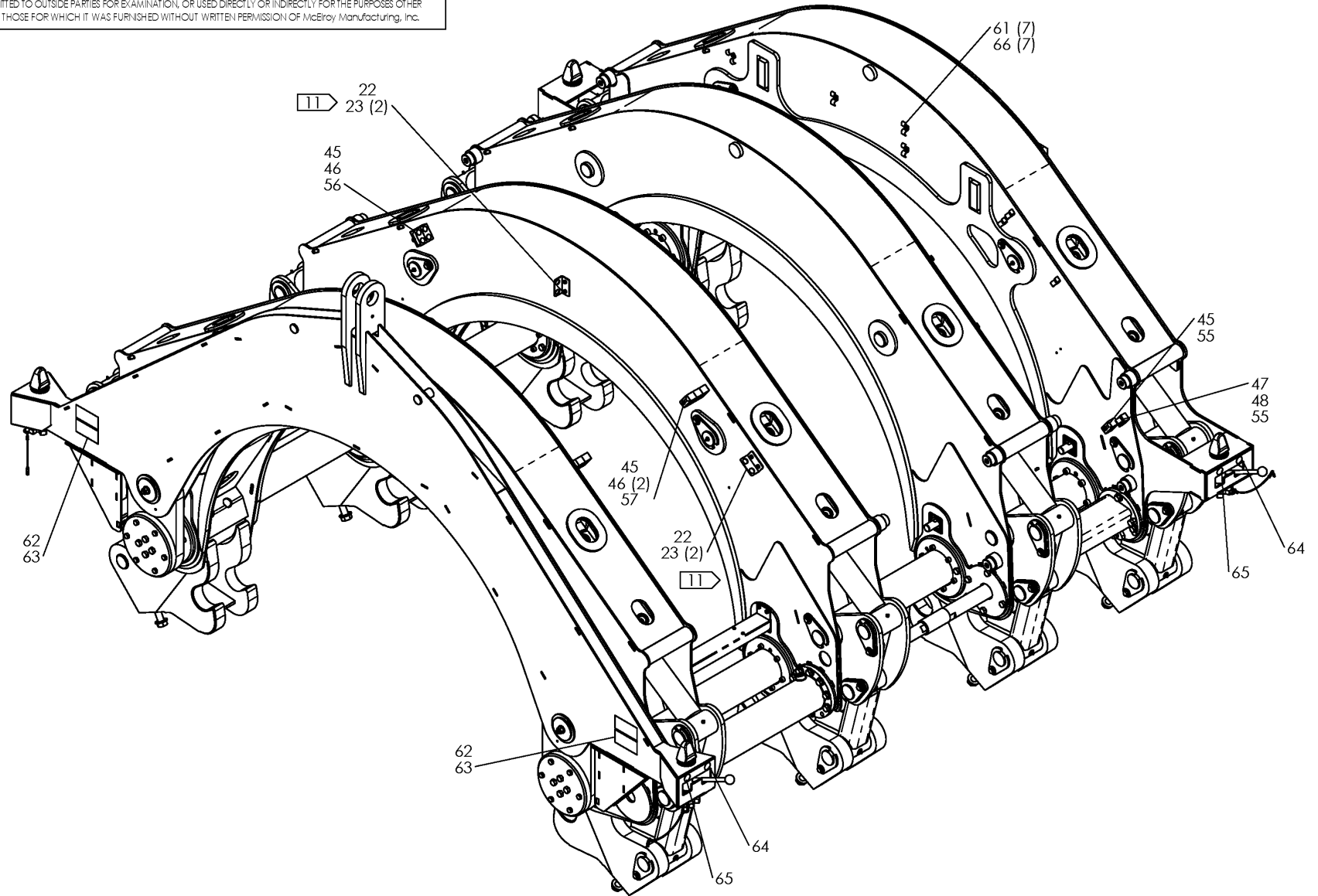
SHT No: 1C

REV No: D

PART No: 7800301

CARRIAGE ASSEMBLY

NOTE: THIS DRAWING AND THE INFORMATION CONTAINED THEREIN IS THE CONFIDENTIAL AND PROPRIETARY PROPERTY OF McElroy Manufacturing, Inc. THE DRAWING IS NOT TO BE REPRODUCED IN ANY MANNER, SUBMITTED TO OUTSIDE PARTIES FOR EXAMINATION, OR USED DIRECTLY OR INDIRECTLY FOR THE PURPOSES OTHER THAN THOSE FOR WHICH IT WAS FURNISHED WITHOUT WRITTEN PERMISSION OF McElroy Manufacturing, Inc.





McElroy Manufacturing, Inc.

The leader by design.

Tulsa, Oklahoma U.S.A.

DRAWN: MRH

CHECK: TMT

APPRVD: JAL

DATE: 3/28/14

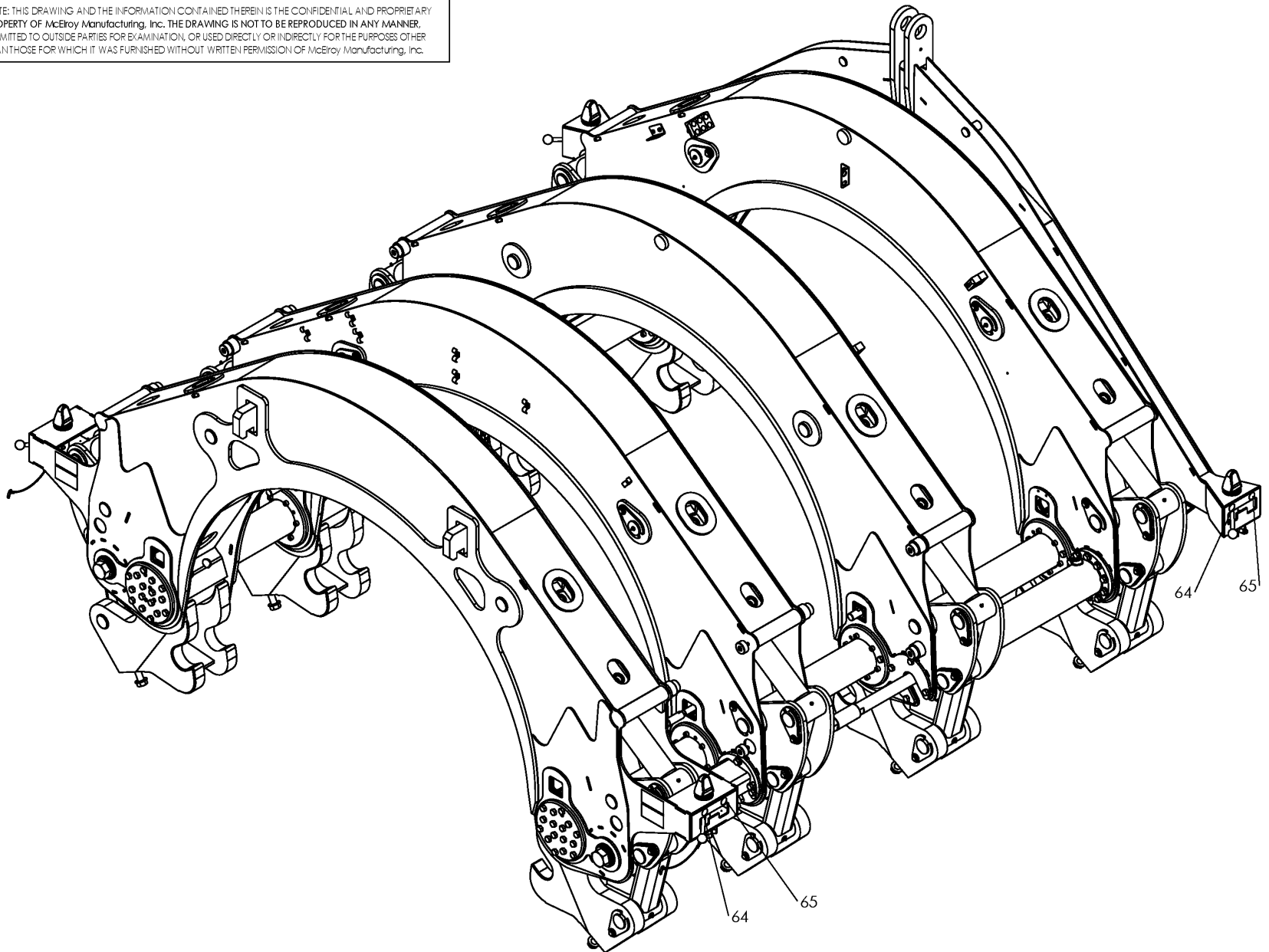
SHT No: 1D

REV No: D

PART No: 7800301

CARRIAGE ASSEMBLY

NOTE: THIS DRAWING AND THE INFORMATION CONTAINED THEREIN IS THE CONFIDENTIAL AND PROPRIETARY PROPERTY OF McElroy Manufacturing, Inc. THE DRAWING IS NOT TO BE REPRODUCED IN ANY MANNER, SUBMITTED TO OUTSIDE PARTIES FOR EXAMINATION, OR USED DIRECTLY OR INDIRECTLY FOR THE PURPOSES OTHER THAN THOSE FOR WHICH IT WAS FURNISHED WITHOUT WRITTEN PERMISSION OF McElroy Manufacturing, Inc.





McElroy Manufacturing, Inc.

The leader by design.

Tulsa, Oklahoma U.S.A.

DRAWN: MRH

CHECK: TMT

APPRVD: JAL

DATE: 3/28/14

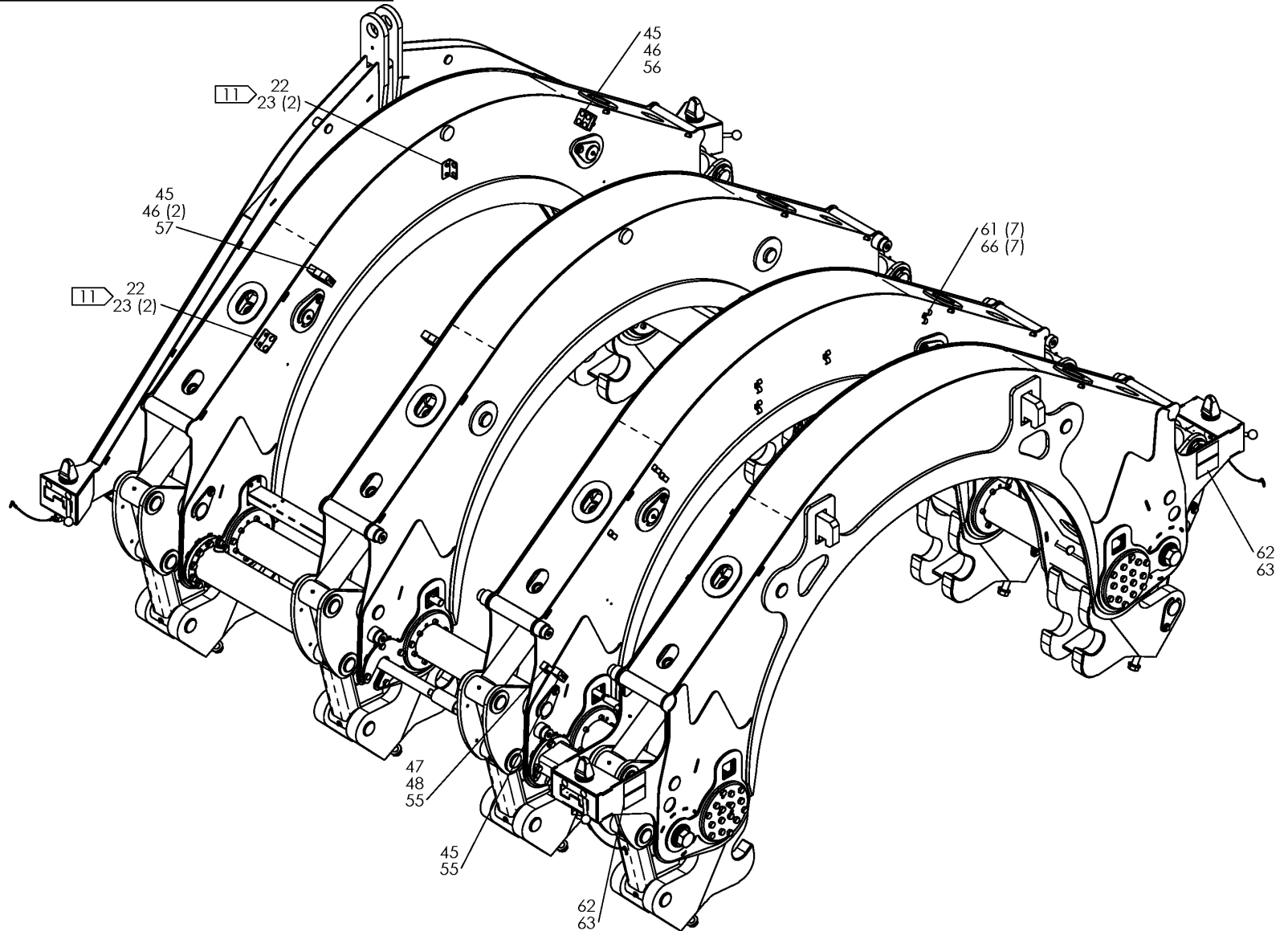
SHT No: 1E

REV No: D

PART No: 7800301

CARRIAGE ASSEMBLY

NOTE: THIS DRAWING AND THE INFORMATION CONTAINED THEREIN IS THE CONFIDENTIAL AND PROPRIETARY PROPERTY OF McElroy Manufacturing, Inc. THE DRAWING IS NOT TO BE REPRODUCED IN ANY MANNER, SUBMITTED TO OUTSIDE PARTIES FOR EXAMINATION, OR USED DIRECTLY OR INDIRECTLY FOR THE PURPOSES OTHER THAN THOSE FOR WHICH IT WAS FURNISHED WITHOUT WRITTEN PERMISSION OF McElroy Manufacturing, Inc.





McElroy Manufacturing, Inc.

The leader by design.

Tulsa, Oklahoma U.S.A.

DRAWN: MRH

CHECK: TMT

APPRVD: JAL

DATE: 3/28/14

SHT No: 1F

REV No: D

PART No: 7800301

CARRIAGE ASSEMBLY

NOTE: THIS DRAWING AND THE INFORMATION CONTAINED THEREIN IS THE CONFIDENTIAL AND PROPRIETARY PROPERTY OF McElroy Manufacturing, Inc. THE DRAWING IS NOT TO BE REPRODUCED IN ANY MANNER, SUBMITTED TO OUTSIDE PARTIES FOR EXAMINATION, OR USED DIRECTLY OR INDIRECTLY FOR THE PURPOSES OTHER THAN THOSE FOR WHICH IT WAS FURNISHED WITHOUT WRITTEN PERMISSION OF McElroy Manufacturing, Inc.

NOTES:

1. USE MEDIUM STRENGTH THREAD LOCKER ON ALL THREADED FASTENERS, UNLESS OTHERWISE NOTED.
2. DO NOT USE THREAD LOCKER
3. USE BEARING RETAINING COMPOUND ON INDEXER LOCATOR INSERT, ITEM 5.
4. UNTAPERED END OF GUIDE ROD GOES IN FIXED JAW. USE TAPERED END OF GUIDE ROD FOR INSERTING INTO JAW ASSEMBLIES AND EXPANDING THEIR SEALS. LUBRICATE GUIDE ROD AND SEALS WITH MOBIL SHC 100 GREASE. TAKE NOTE OF AND ENSURE THE PROPER ORIENTATION OF EACH JAW AND THE GUIDE ROD SUPPORT PLATE WELDMENT.
5. ORIENT TAPPED HOLES IN GUIDE ROD PLUG WITH HOLES IN GUIDE ROD COVER PLATES AND SHARP CORNER OF GUIDE ROD PLUG AGAINST RETAINING RING.
6. FOR EACH POSITION, USE TAPPED HOLE IN INDEXER CONE SHAFT THAT WILL ORIENT ITS TOP AND LEVER AS SHOWN. LEVER LEVERS OFF UNTIL CARRIAGE IS MOUNTED IN MACHINE FRAME.
7. USE HYDRAULIC PRESS TO PRESS IN SPHERICAL BUSHING BY PUSHING ON OUTER RACE ONLY.
8. ORIENT JAW CONVERSION LINK WITH OPENING FACING DOWN AND OUTBOARD AS SHOWN.
9. ORIENT HYDRAULIC CYLINDER PORTS UP AND INBOARD AS SHOWN. ROD END FLANGE CAN BE ROTATED TO ALIGN WITH TAPPED HOLES IN JAW.
10. THE END WITH ELECTRICAL CONNECTION GOES TOWARD THE INNER MOVABLE JAW.
11. ORIENT BULKHEAD CLIPS AS SHOWN
12. INSTALL BOLT TO ACT AS A THREAD PROTECTOR, NUT IS USED AS A SPACER (THE TAPPED HOLES ARE FOR LATER USE WITH JACK BOLTS).
13. TORQUE TO 50 FT LBS
14. TORQUE TO 160 FT LBS
15. TORQUE TO 800 FT LBS
16. LONG STUD OF BALL JOINT (ITEM 67) GOES IN GUIDE ROD SUPPORT PLATE, WITH WASHERS ON EACH SIDE. INSTALL BALL JOINT BEFORE INSTALLING LINK (ITEM 17).
- 17.
18. APPLY ONLY MOBIL SHC 100 GREASE TO ALL 58 GREASE ZERKS. WHEN GREASING THE PIVOT TUBES, ALTERNATE GREASING EACH END (TO MINIMIZE TRAPPED AIR) UNTIL GREASE COMES OUT THE VENT ON THE QUARTER JAW ADAPTER HUB.
19. ADJUST BOLT HEAD TO LEAVE A GAP OF 3/8" WITH ITS RESPECTIVE LINK. LOCK THE POSITION WITH THE NUT.
20. HYDRAULIC FITTING TEES GO ON THIS CYLINDER.
21. GREASE ZERK ON BOLT HEAD GOES INBOARD.
22. DETENT PIN HOLES GO OUTBOARD.

## McElroy Manufacturing Parts List

**Part Number:** 7800301 Talon 2000 Carriage Assembly**Part Number 7800301 Component List**

Item	Component	Description	Quantity	Unit	Price
1	7801101	Talon 2000 Outer Fixed Jaw Assembly	1.0	EA	0.00
2	7801201	Talon 2000 Inner Fixed Jaw Assembly	1.0	EA	0.00
3	7801301	Talon 2000 Inner Movable Jaw Assembly	1.0	EA	0.00
4	7801401	Talon 2000 Outer Movable Jaw Assembly	1.0	EA	0.00
5	7801701	Indexer Locator Insert	4.0	EA	0.00
6	7801703	Indexer Mounting Cone	4.0	EA	0.00
7	7812101	Cyl Extension Rod Washer	2.0	EA	0.00
8	7817501	Handwheel Wld	4.0	EA	349.00
9	7834601	Guide Rod	2.0	EA	0.00
10	7834701	Guide Rod Plug	4.0	EA	0.00
11	7835601	Cylinder Extension Rod	2.0	EA	0.00
12	7835701	Transducer Mount	1.0	EA	0.00
13	7835801	Jaw Conversion Link (2+2)(3+1)	2.0	EA	0.00
14	7836001	Guide Rod Support Wld	1.0	EA	0.00
15	7836101	Stop Wld	2.0	EA	0.00
16	7836601	Guide Rod Cover	2.0	EA	0.00
17	7836701	Guide Rod Link	2.0	EA	0.00
18	7836801	Pin	2.0	EA	0.00
19	7836901	Link Washer	4.0	EA	0.00
20	7837001	Transducer Indicator Arm	1.0	EA	0.00
21	7840401	Indexer Mount Lever	4.0	EA	172.00
22	7841301	Carriage Bulkhead Bracket	4.0	EA	0.00
23	MAB00031	5/16-18NCX1/2LG Hhcs	12.0	EA	0.43
24	MAB00081	1/2-13NCX1-1/4LG Hhcs	6.0	EA	1.43
25	MAB00085	1-8NCX3LG Hhcs GR8	2.0	EA	13.13
26	MAB00111	1/2-13NCX3-3/4LG Hhcs	12.0	EA	1.53
28	MAB00176	5/8-11NCX1-3/4 LG Hhcs GR8	16.0	EA	0.00
29	MAB00181	5/8-11NCX2LG Hhcs GR8	38.0	EA	2.27
30	MAB00218	1-3/4-12NFX4LG Hhcs GR8	2.0	EA	0.00
31	MAB00220	5/8-11NCX1LG Hhcs	24.0	EA	0.00
32	MAB00221	1-8NCX3-1/2LG Hhcs GR8	2.0	EA	0.00
33	MCK00008	1/8DIA X 1/2 Grip Blind Rivet	4.0	EA	0.27
34	MAH00258	5/8 X 5" Greasable Bolt Kit	2.0	EA	0.00
36	MBA00009	1/2-13NC Fhsh Hex Nut Stl PL	14.0	EA	0.46
37	MBA00011	5/8-11NC Fhsh Hex Nut Stl PL	8.0	EA	0.70
38	MBG00086	5/8 Hardened Flat Washer	54.0	EA	4.28
39	MBG00103	1-3/4 Hardened Flat Washer PL	2.0	EA	0.00
40	MBG00107	1 Sae Flat Washer PL	4.0	EA	0.00
41	MCA00051	4.500 Int Snap Ring	4.0	EA	0.00
42	MCE00042	Quick Release Pin SS	4.0	EA	0.00
43	MDM00488	2" Spherical Bushing	2.0	EA	0.00
44	MEB00203	5B X 22S X 2R Hyd Cyl	2.0	EA	3,354.00
45	MFD00100	.84"ID Twin Hose Clmp W/cvr PL	6.0	EA	0.00
46	MFD00101	.84" ID Twin Hose Clamp	6.0	EA	0.00
47	MFD00102	1/2"ID Twin Hose Clmp W/cvr PL	2.0	EA	0.00
48	MFD00103	.69" ID Cushion Clamp	2.0	EA	0.00
49	MJJ00039	Knob 1-1/2" Dia Brass Ball	4.0	EA	51.12
50	MJQ00436	2" Bore Clamp Collar	2.0	EA	117.00
51	MQB00073	24" Linear Transducer, 4-20MA	1.0	EA	2,131.00
52	MQB00066	Captive-sliding Xdcr Magnet	1.0	EA	265.00
53	MAC00038	#10-24NCX3/4LG Shcs SS	4.0	EA	0.50
54	MBC00004	#10-24NC Mach Scr Nyl Lck Nut	4.0	EA	0.31
55	MAB00039	5/16-18NCX2-1/2LG Hhcs	4.0	EA	0.70
56	MAB00046	5/16-18NCX4-1/2LG Hhcs GR5 PL	2.0	EA	0.00
57	MAB00050	5-16-18NCX7LG Hhcs GR5 PL	2.0	EA	0.00

## McElroy Manufacturing Parts List

**Part Number:** 7800301 Talon 2000 Carriage Assembly

58	MJR00015	14OZ Tube Mobil 100 Syn Grease	12.0 EA	0.00
59	7800730	Talon 2000 Carriage Hydraulic / Plumbing Schematic	1.0 EA	0.00
60	MAB00175	5/8-11NCX1-1/2 LG Hhcs GR8	16.0 EA	0.00
61	MHA00038	3/4 Tube Clip	14.0 EA	12.14
62	8163260	Pipe Handling Warning Label	4.0 EA	0.00
63	8163261	Overhead Components Wrngng Lbl	4.0 EA	0.00
64	8163267	Lock Label	4.0 EA	0.00
65	8163268	Unlock Label	4.0 EA	0.00
66	MAC00055	1/4-20NCX1LG Shcs PL	14.0 EA	0.25
67	MDM00508	M5X0.8MM Male Inline Balljoint	1.0 EA	0.00
68	MBC00059	M5X0.8 Hex Nylon Lock Nut	1.0 EA	0.00
69	MBF00004	#10 TY 'a' Wide FL Wshr Stl PL	2.0 EA	0.10
70	8163270	32.99 SQ IN Tapa Label	1.0 EA	0.00

Please visit <https://fusion.mcelroy.com/parts> to purchase parts or for more information.