



**McElroy Manufacturing, Inc.**  
The leader by design.  
Tulsa, Oklahoma U.S.A.

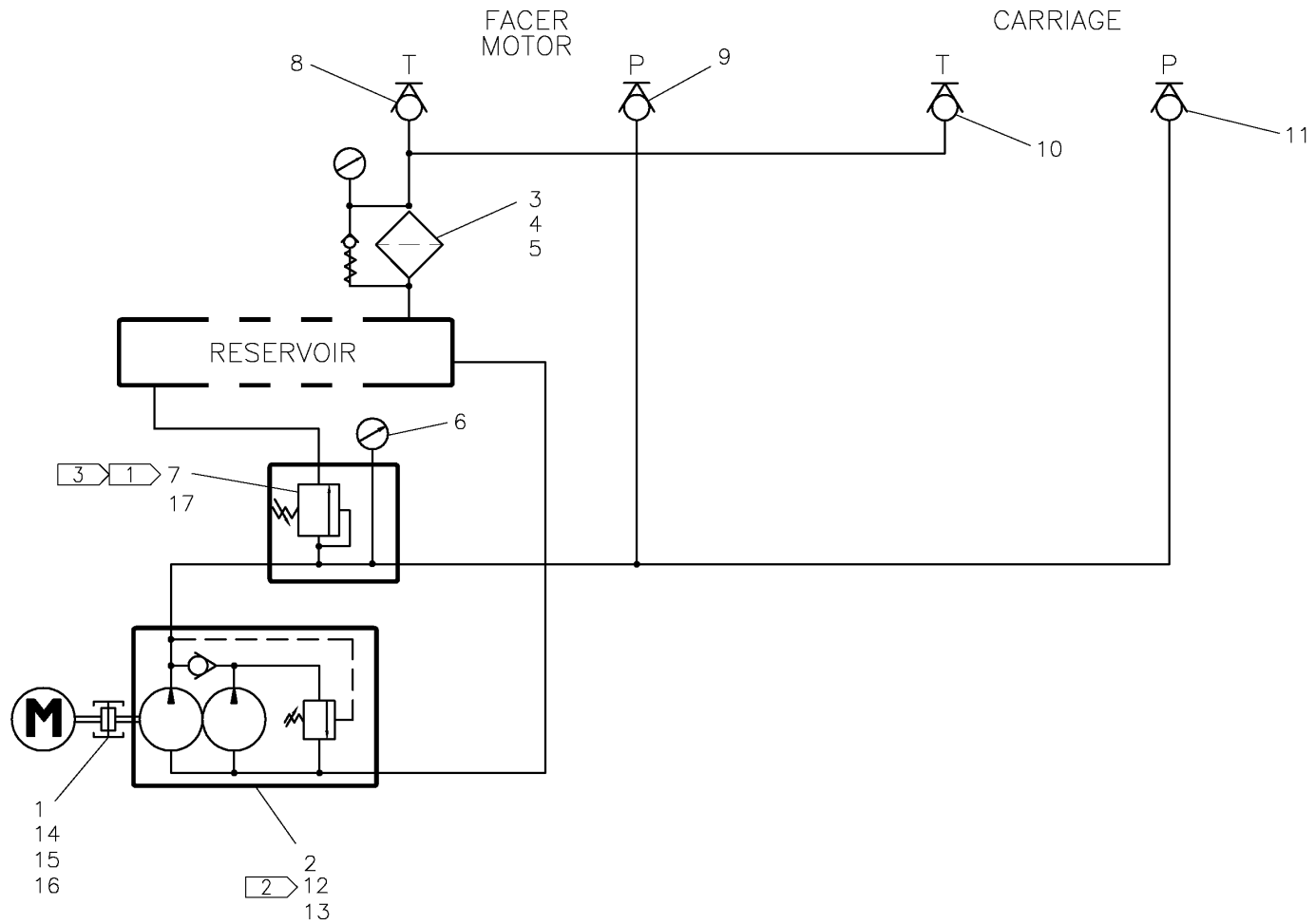
DRAWN: ALK	CHECK: BLM	APPRV'D: JRP	DATE: 12/6/02	DWG No: 860900	SHT No: 1	REV No: C	PART No: 860901
------------	------------	--------------	---------------	----------------	-----------	-----------	-----------------

#28 HYDRAULIC SCHEMATIC	CAD No: 860901
-------------------------	----------------

NOTE: THIS DRAWING AND THE INFORMATION CONTAINED THEREIN IS THE CONFIDENTIAL AND PROPRIETARY PROPERTY OF McElroy Manufacturing, Inc. THE DRAWING IS NOT TO BE REPRODUCED IN ANY MANNER, SUBMITTED TO OUTSIDE PARTIES FOR EXAMINATION, OR USED DIRECTLY OR INDIRECTLY FOR THE PURPOSES OTHER THAN THOSE FOR WHICH IT WAS FURNISHED WITHOUT WRITTEN PERMISSION OF McElroy Manufacturing, Inc.

**NOTES:**

1. DO NOT ADJUST VALVE BELOW 500PSI IT WILL OVERLOAD THE PUMP MOTOR.
2. THIS ITEM REQUIRES (4) TOTAL (2) COME WITH THE PUMP ITEM #2.
3. TO ORDER RELIEF VALVE CARTRIDGE ONLY (WITHOUT MANIFOLD) ORDER MEH00022.



## McElroy Manufacturing Parts List

**Part Number:** 860901 28 Hydraulic Schematic

### Part Number 860901 Component List

Item	Component	Description	Quantity	Unit	Price
1	MEA00002	Pump Adapter	1.0	EA	152.00
2	MEA00052	Pump	1.0	EA	1,024.00
3	MED00056	Filter Head	1.0	EA	33.93
4	MED00051	10 Micron ZAE-10 Filter Elem	1.0	EA	56.52
5	MEE00021	Pressure Gauge	1.0	EA	33.15
6	MEE00005	1500PSI/BAR Pressure Gauge	1.0	EA	102.00
7	MEH00007	Relief Valve	1.0	EA	361.00
8	MFH00045	1/2 Fsae Quick Disc Coupler	1.0	EA	60.00
9	MFH00046	1/2 Fsae Quick Disc Nipple	1.0	EA	39.67
10	MFH00043	3/8 Fsae Quick Disc Coupler	1.0	EA	58.19
11	MFH00044	3/8 Fsae Quick Disc Nipple	1.0	EA	29.01
12	MAB00048	5/16-18NCX5-1/2LG Hhcs	2.0	EA	1.33
13	MBE00006	5/16 Reg Splt Lck Wshr Stl PL	2.0	EA	0.11
14	MAB00065	3/8-16NCX1-1/4LG Hhcs	4.0	EA	0.52
15	MBE00007	3/8 Reg Splt Lck Wshr Stl PL	4.0	EA	0.12
16	MDJ00005	5/8X.439, .095KEY Cplg Assy	1.0	EA	80.53
17	816309	DO Not Adj Press Below Label	1.0	EA	10.43

Please visit <https://fusion.mcelroy.com/parts> to purchase parts or for more information.