



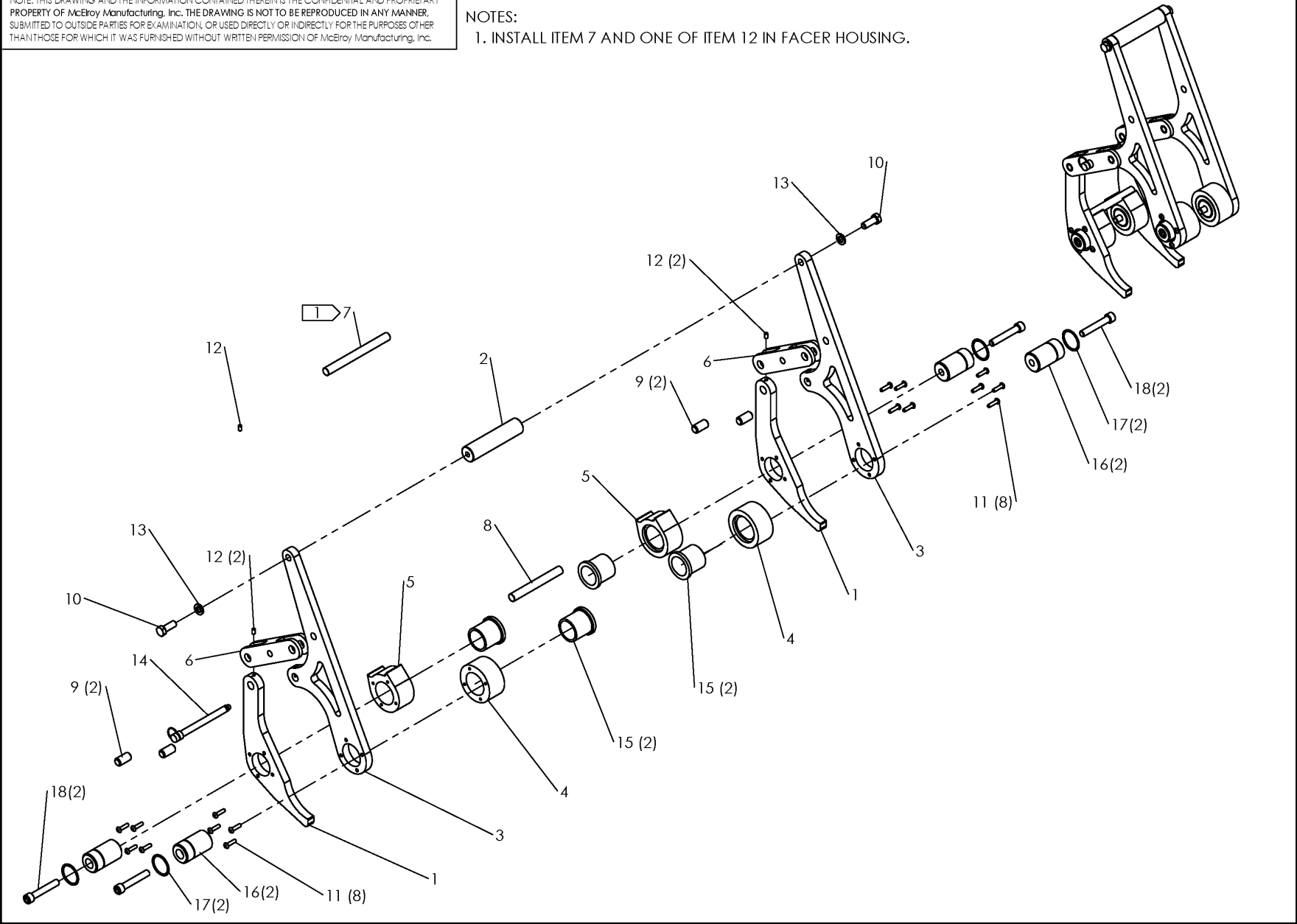
McElroy Manufacturing, Inc.
The leader by design.
Tulsa, Oklahoma U.S.A.

DRAWN: MRH CHECK: BOC APPR'VD: BWJ DATE: 4/5/16 SHT No: 1 REV No: A PART No: T4831201

FACER LATCH ASSEMBLY

NOTE: THIS DRAWING AND THE INFORMATION CONTAINED THEREIN IS THE CONFIDENTIAL AND PROPRIETARY PROPERTY OF McElroy Manufacturing, Inc. THE DRAWING IS NOT TO BE REPRODUCED IN ANY MANNER, SUBMITTED TO OUTSIDE PARTIES FOR EXAMINATION, OR USED DIRECTLY OR INDIRECTLY FOR THE PURPOSES OTHER THAN THOSE FOR WHICH IT WAS FURNISHED WITHOUT WRITTEN PERMISSION OF McElroy Manufacturing, Inc.

NOTES:
1. INSTALL ITEM 7 AND ONE OF ITEM 12 IN FACER HOUSING.



McElroy Manufacturing Parts List

Part Number: T4831201 Facer Latch Assembly

Part Number T4831201 Component List

Item	Component	Description	Quantity	Unit	Price
1	4851801	Facer Latch	2.0	EA	395.00
2	4851601	Facer Latch Handle	1.0	EA	151.00
3	4851701	Actuator Arm	2.0	EA	0.00
4	4851901	Actuator Arm Bushing Block	2.0	EA	0.00
5	4852001	Facer Latch Bushing Block	2.0	EA	0.00
6	4852101	Facer Latch Conn Link	2.0	EA	0.00
7	4853401	Handle Limit Pin (Effective to 3/27/17)	1.0	EA	0.00
7	RZN0400105	0.500 Ann. & C.d. 304 SS Rnd	1.0	EA	0.00
8	4853402	Latch Limit Pin (Effective to 3/27/17)	1.0	EA	0.00
8	RZN0400100	0.500 Ann. & C.d. 304 SS Rnd	1.0	EA	0.00
9	4853403	Pivot Pin	4.0	EA	0.00
9	RZN0400145	0.500 C.f., Ann. 303 SS Rnd (Effective 3/27/17 to 9/18/17)	4.0	EA	0.00
10	MAB00064	3/8-16NCX1LG Hhcs	2.0	EA	0.51
11	MAE00025	#10-24NCX3/4LG Bhscs	16.0	EA	0.00
12	MAG00062	#10-24NCX3/8LG Skt Set Scr PL	5.0	EA	0.25
13	MBE00007	3/8 Reg Splt Lck Wshr Stl PL	2.0	EA	0.12
14	MCE00004	3/8DIA X3.75 Grip Detent Pin	1.0	EA	6.34
15	MDM00080	Flange Bushing	4.0	EA	31.48
16	4852201	Pivot Mount Rest Button	4.0	EA	0.00
17	MCB00070	1-1/4 Spiral Retaining Ring	4.0	EA	0.00
18	MAH00076	3/8-16NCX2-1/4LG Shcs SS	4.0	EA	2.86

Please visit <https://fusion.mcelroy.com/parts> to purchase parts or for more information.