

Overview:

This kit is used to expand the capabilities of the Hornet.

Parts included in kit:

Part Number	Description	Qty
SWP1009884	Hornet Auxiliary Clamp Assembly	1
SWP1072089	3/4" Auxiliary Clamp Insert	2
SWP1072091	1/2" Auxiliary Clamp Insert	2
SWP101332301	This Instruction Sheet	1

Tools required:

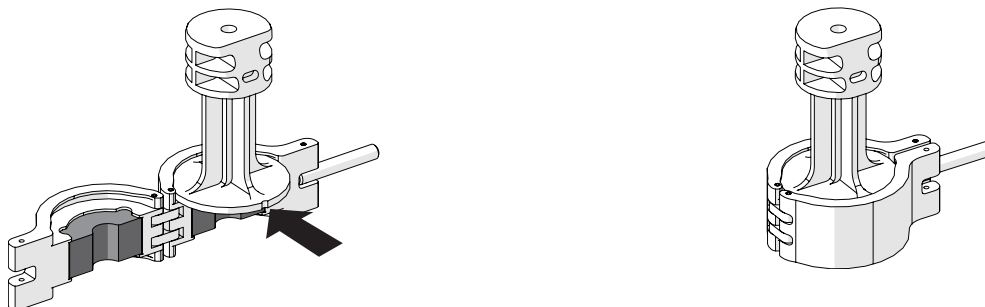
- None

Installation:

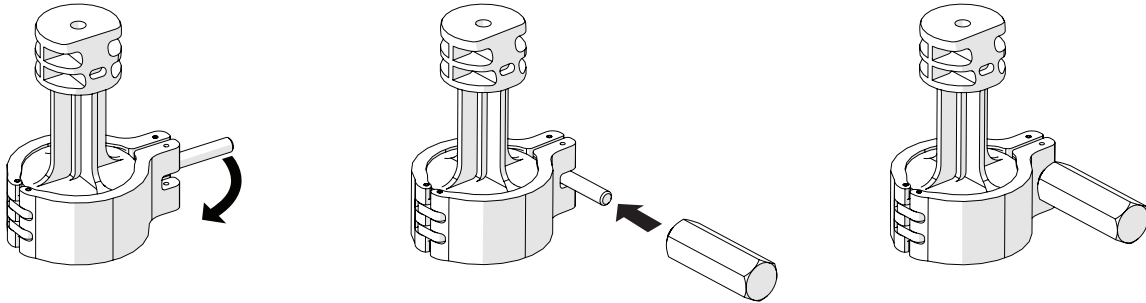
Install the appropriate sized inserts into each side of the clamp. Push the inserts in until they are secured in place by the retaining slots.



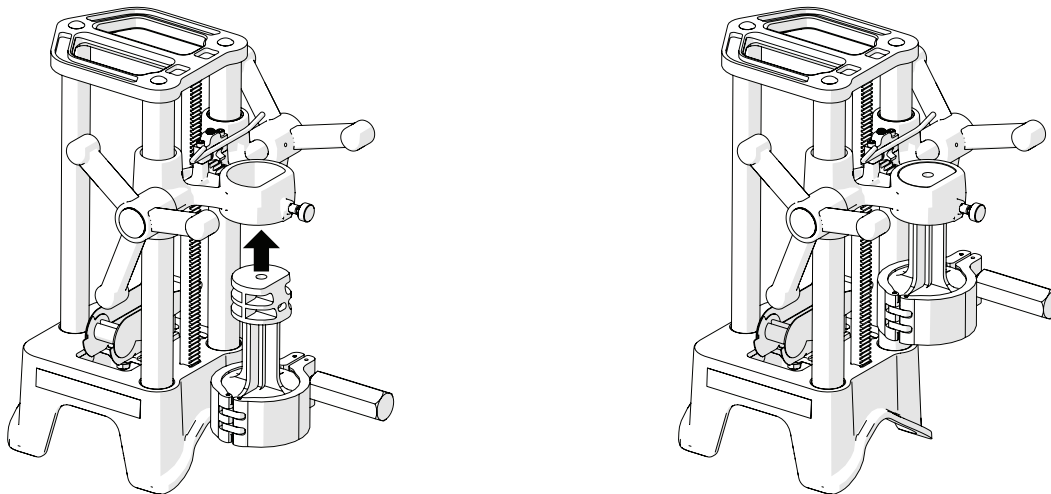
Insert the spacer body (**SW25501**) from the accessory kit (**ASW27401**) into the top slot of the clamp as shown. Once the inserts and the spacer body have been installed, insert the appropriate fitting and close the clamp.



Swing the clamp latch closed and screw the clamp knob (A211501) from the accessory kit (ASW27401) onto the clamp latch until the spacer body does not rotate and the fitting is secure.



Once assembled, insert the spacer body into the designated slot on the machine.



INSTRUCTION SHEET REVISION HISTORY LISTING

PART NO: SWP101332301
DESCRIPTION: Hornet™ AUXILIARY CLAMP KIT
ORIGINATOR: CAR **CHECK:** RBS **APPRV'D:** JBC **RELEASED:** 11/20/23

<u>CHK/APR</u>	<u>REV</u>	<u>DATE</u>	<u>BY</u>	<u>DESCRIPTION OF REVISION</u>
CAR/JBC	A	11/29/23	RBS	CORRECTED MACHINE ILLUSTRATIONS, UPDATED INSTALLATION PROCESS & PART QUANTITIES.
RBS/JBC	B	5/20/25	RBS	REVISED "SWP1010602" TO "SWP1072089" AND "SWP1010604" TO "SWP1072091." ADDED MISSING BOLTS TO ILLUSTRATION ON PAGE 2. CHANGES MADE TO UTILIZE NEW DESIGN FOR CLAMP INSERTS.