

Overview:

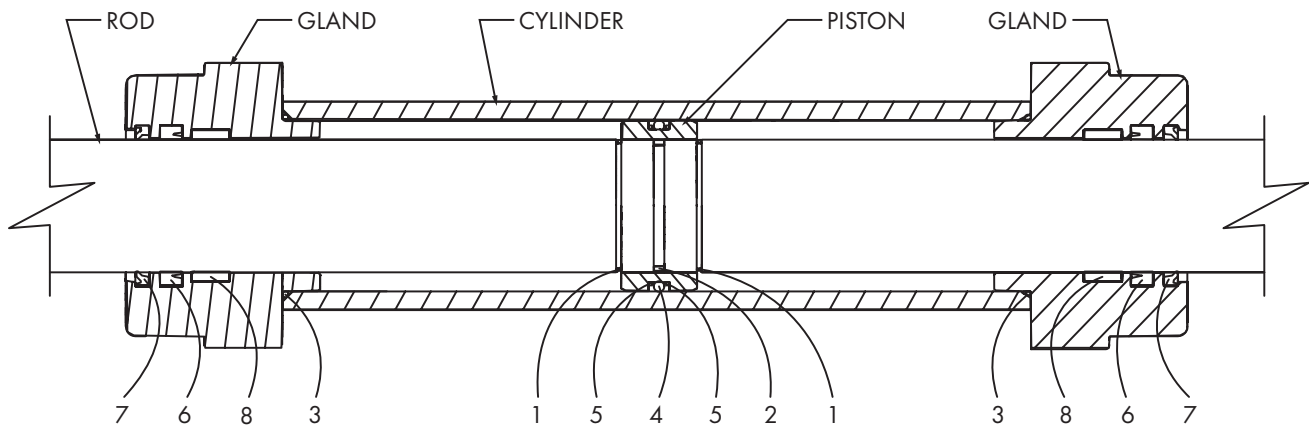
This instruction sheet describes the locations for seal replacement on a 412/618 Low Force Cylinder.

Parts included in kit:

Item	Part Number	Description	Qty
1	MCB00011	EXTERNAL SNAP RING	4
2	MDL00003	O-RING	2
3	MDL00188	O-RING	4
4	MDL00224	O-RING	2
5	MDL00369	BACK-UP RING	4
6	MDL00091	SEAL	4
7	MDL00092	WIPER	4
8	MDM00279	2" OD GLAND BEARING RING	4
NA	T18P102170001	This Instruction Sheet	1

Procedure:

Install seals with seal cavity oriented as shown on the diagram. Install washer relative to seal as shown in the diagram.



INSTRUCTION SHEET REVISION HISTORY LISTING

PART NO: T18P102170001

DESCRIPTION: 412/618 LOW FORCE WEAR BAND SEAL KIT

ORIGINATOR: RBS **CHECK:** SPA **APPRV'D:** JBC **RELEASED:** 4/2/24

<u>CHK/APR</u>	<u>REV</u>	<u>DATE</u>	<u>BY</u>	<u>DESCRIPTION OF REVISION</u>
----------------	------------	-------------	-----------	--------------------------------