



INSTRUCTION SHEET

Sidewinder Dry Gauge Calibration – Externally Adjustable Zero Pointer

ASW13102, ASW13103,
ASW13104, ASW13105

Parts and Tools Required

Supplied by the customer:

1. Pressure calibration equipment
2. Adjustable or open end wrench
3. Flat head screw driver
4. Pliers

Preparing Gauge

- • Attach gauge to pressure testing apparatus.
- • Turn bezel of gauge counterclockwise approximately 1/4 turn or unscrew depending upon gauge design and remove bezel.

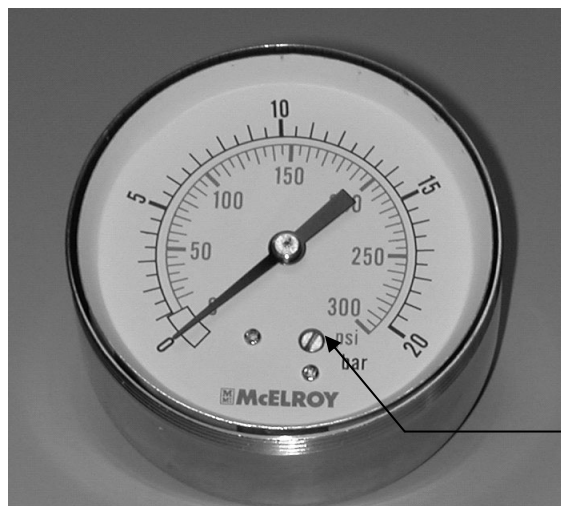
Zero the pointer

- • With no pressure applied, verify that the pointer is located inside the zero box area. If the pointer is not within the box, rotate the external adjustment screw shown in Figure 1 until the pointer is in the center of the box area as shown.

Calibrating Gauge

- • Using pliers, pull the needle off the gauge, making sure to pull the needle straight out.
- • Pressurize calibration equipment to a major increment in the operating range of the Sidewinder. Place the needle on the gauge at the known increment, making sure the needle has snapped into place. **EXAMPLE:** For a Sidewinder with a 300 psi gauge using fittings that require 250 psi, pressurize calibration equipment to 250 psi and adjust the needle to 250 psi.
- • Replace bezel.

NOTICE: Applying excess pressure will permanently damage the gauge. Never apply pressure that is greater than the maximum indication on the pressure gauge. The calibration procedure will not correct a damaged gauge.



External Adjustment
Screw

Figure 1

DRAWING REVISION HISTORY LISTING

PART NO: SW1310401

DESCRIPTION: SIDEWINDER DRY GAUGE CALIBRATION—EXTERNALLY ADJUSTABLE ZERO POINTER

<u>APPR.</u>	<u>REV</u>	<u>DATE</u>	<u>BY</u>	<u>DESCRIPTION OF REVISION</u>
SWB	A	2/22/05	MLM	UPDATED INSTRUCTIONS TO INCLUDE THE EXTERNALLY ADJUSTABLE CALIBRATION PROCEDURE, RENAMED PREVIOUS VERSION TO SW1310601, SIDEWINDER DRY GAUGE CALIBRAION—NON EXTERNALLY ADJUSTABLE INSTRUCTION SHEET.
SWB	B	12/15/05	SWB	ADDED INFORMATION FOR ZEROING POINTER PRIOR TO CALIBRATING AND REVISED DESCRIPTION TO INDICATE ZERO POINTER CAPABILITY TO ELIMINATE CONFUSION.